

“Closing the loop” Maternity

Michelle Wise
Specialist Obstetrician, NWH

↓ Induction of labour

- Post term virtual clinic
- Correct EDD in Healthware
- Prospective audit in WAU
- Prolonged latent phase

↓ Induction of labour

- PTVC for community midwives
- Low risk women with GDM
- Low risk sga babies
- Regional guideline

Private practice

- ◉ *" private obstetrics causes increased intervention"*
- ◉ *" need to adjust the clinical governance system to provide some governance for private practice"*
- ◉ Individual benchmarking

Model of care

- Review
- Collaboration with WDHB

Post partum haemorrhage

- ◉ Revised guideline
- ◉ PPH Checklist
- ◉ “Iron in Pregnancy” project

Severe maternal morbidity

- ◉ New process of case review
- ◉ Educational rounds

Closing the Loop in Gynaecology 2013

2012 Commentary

- Peter Sykes

Key Points

- Colposcopy
- Gynae Oncology
- Urogynaecology

Colposcopy

- Service Capacity
- Referral triage esp PCB and Appearance of cervix – where cytology was reported normal
- Engage with NCSP re referral pathways
- Solutions Plus
- PRINCess Trial

Gynae Oncology

- Waiting times Referral-FSA-Treatment
- Resource limitation
- MDM
- Core staff, Clinics, theatre

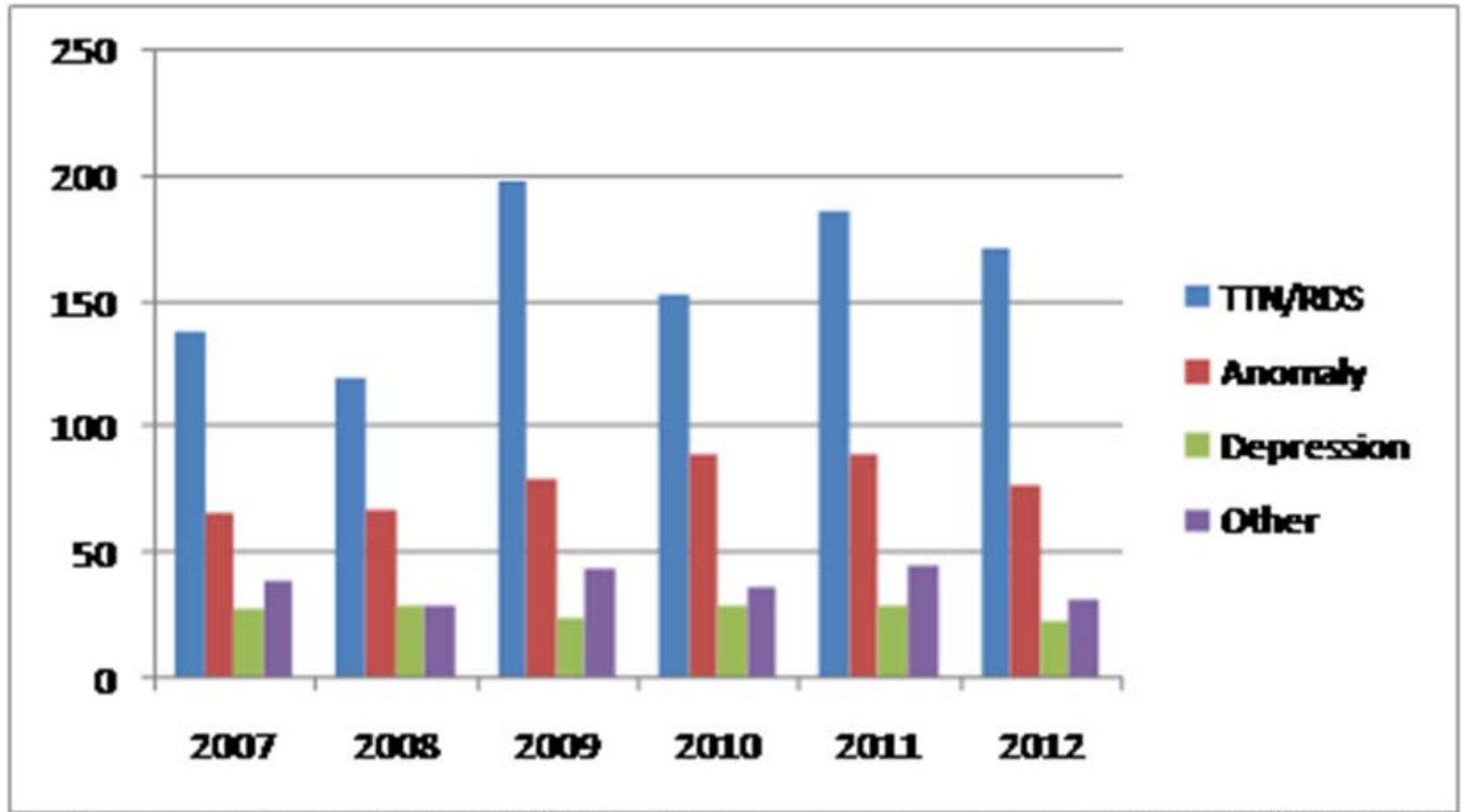
Work in progress

- Aligning Women's Health (Maternity and Gynaecology) Sentinel Event and Serious Morbidity
- Gynae Endoscopy Unit
- Include data on outcomes following Endo Ablation and Fibroid Embolisation treatments
- Generalist Gynae support to GO
- Implementation of EDU new Model of Care
- Out patient fast-track Abnormal Uterine Bleeding Service
- ADHB Fertility Plus/Regional Contract
- Regional Collaboration with WDHB incl Referral Pathways

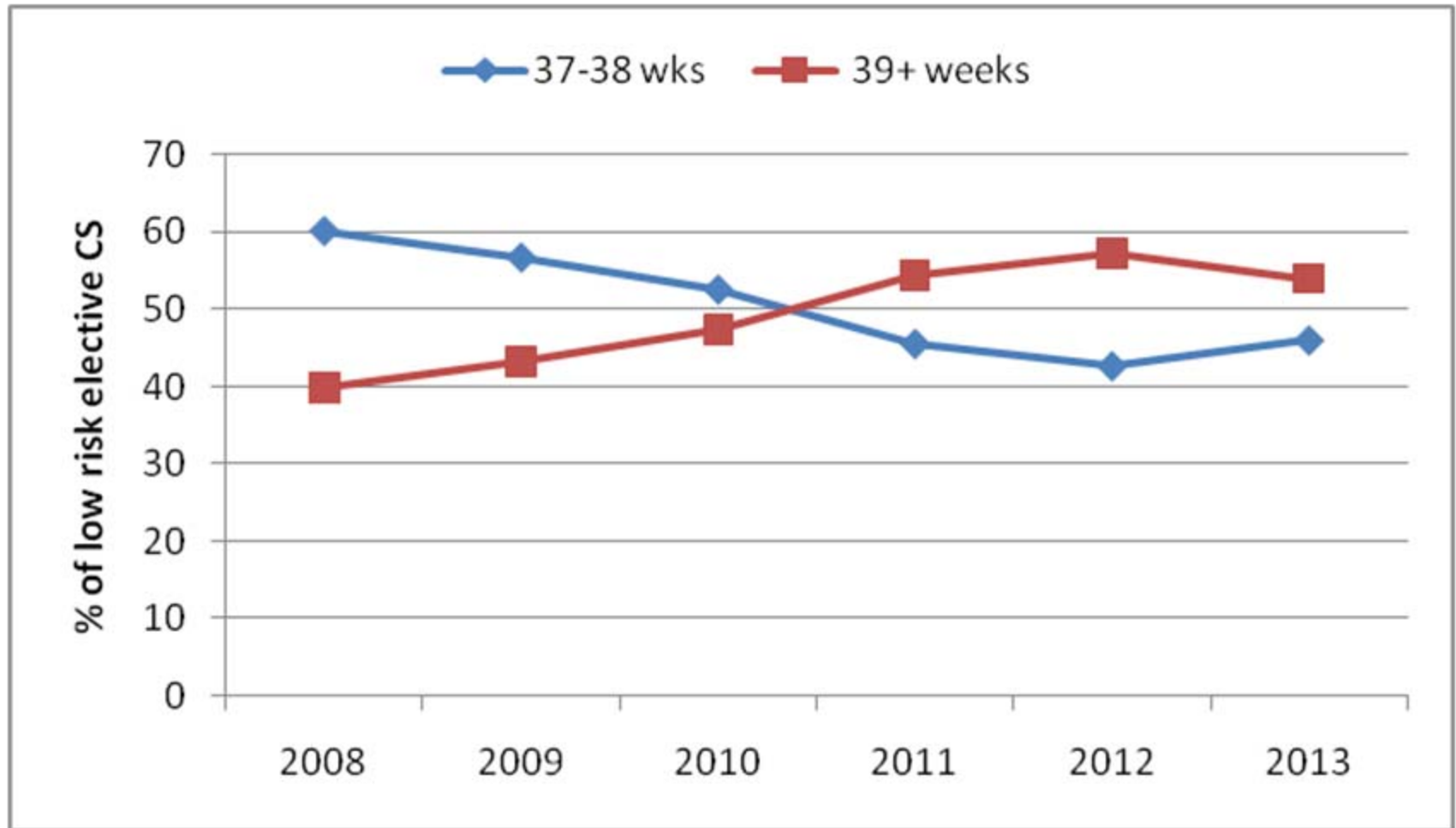
Newborn Services Kidz First: commentary

- Discussed IVH rates
 - Small numbers
 - ↓ severe grades 24-7 wks for 2012
- Use of respiratory support at term

Term admission number by indication



Gestation at low risk elective CS at term



Proportion of TTN/RDS term admits treated with CPAP

