

# Newborn Services

Malcolm Battin

# Really good data ....



[www.timoelliott.com](http://www.timoelliott.com)

*“When you two have finished arguing your opinions, I actually have data!”*

# Really good data ....



[www.timoelliott.com](http://www.timoelliott.com)

*“When you two have finished arguing your opinions, I actually have data!”*

# Closing the Loop...

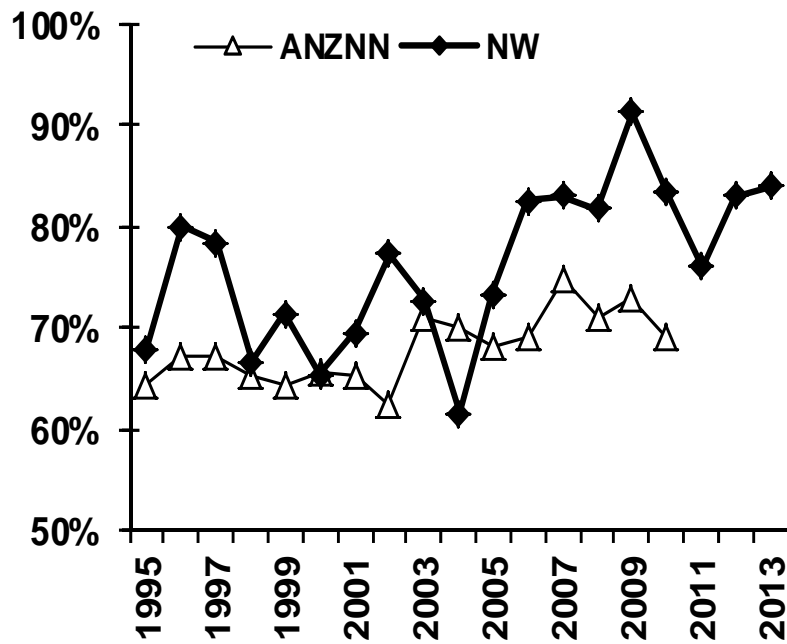
- Three presentations based on discussion last year at ACR:
  1. Late preterm baby on the ward
  2. Review of sepsis data
  3. Effects on outcome grouping due to changes in Bayley testing

# Opportunity for case review

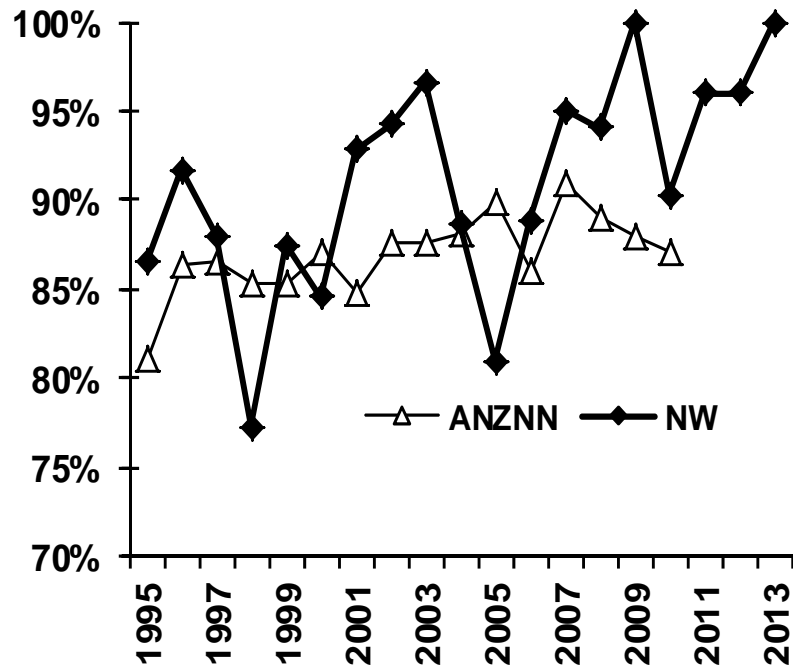
Details of inborn HIE Stages 2 or 3 (~ 1.22/1000 births)

	Gestation	BW (g)	HIE Stage	Apgar 1/5	Comment
Theatre	39	3235	3	3/4	Prolapsed cord, cooled, abnormal MRI and poor neurological function
Theatre	39	3120	3	1/3	Fetal bradycardia, emergency section, cooled, abnormal MRI & neurology - palliative care
Delivery Suite	41	4170	3	0/0	Emergency section for obstructed labour, initial cooling but withdrawn support
Theatre	41	3955	3	3/5	Amniotic fluid embolism, cooled, MRI reassuring
Theatre	37	3210	2	2/2	Maternal DKA, cooled, MRI abnormal
Theatre	41	3420	3	1/0	Thick meconium, cooled, abnormal MRI and abnormal examination
Theatre	38	3430	2	4/8	Knot in cord, cooled, early seizure, MRI and EEG reassuring
Theatre	37	3220	2	1/2	Fail to progress, seizures, cooling, MRI abnormal
Theatre	40	3530	2	3/5	Meconium aspiration syndrome, cooling, MRI reassuring

# Survival at 24-25 & 26-27 weeks compared with ANZNN 1995-2013

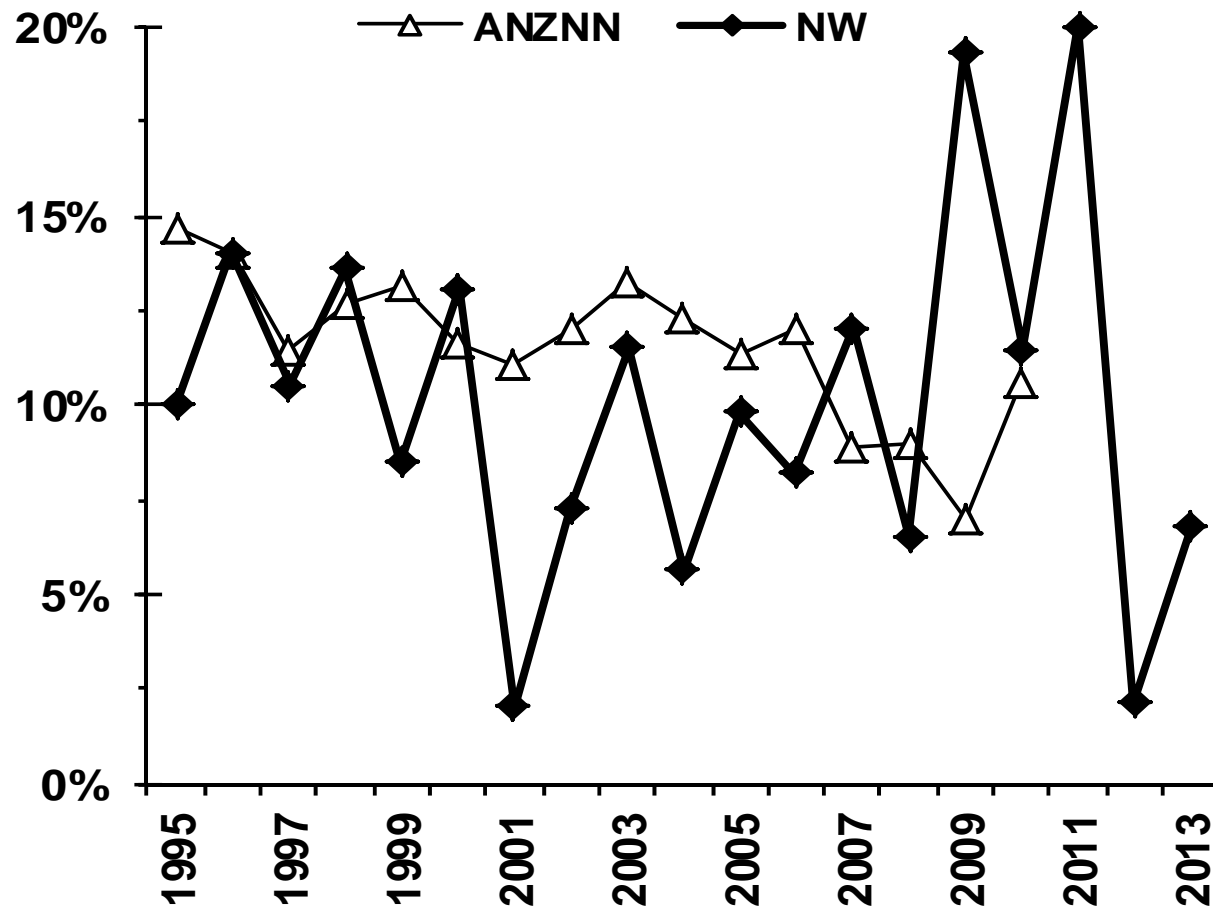


24-25 weeks gestation

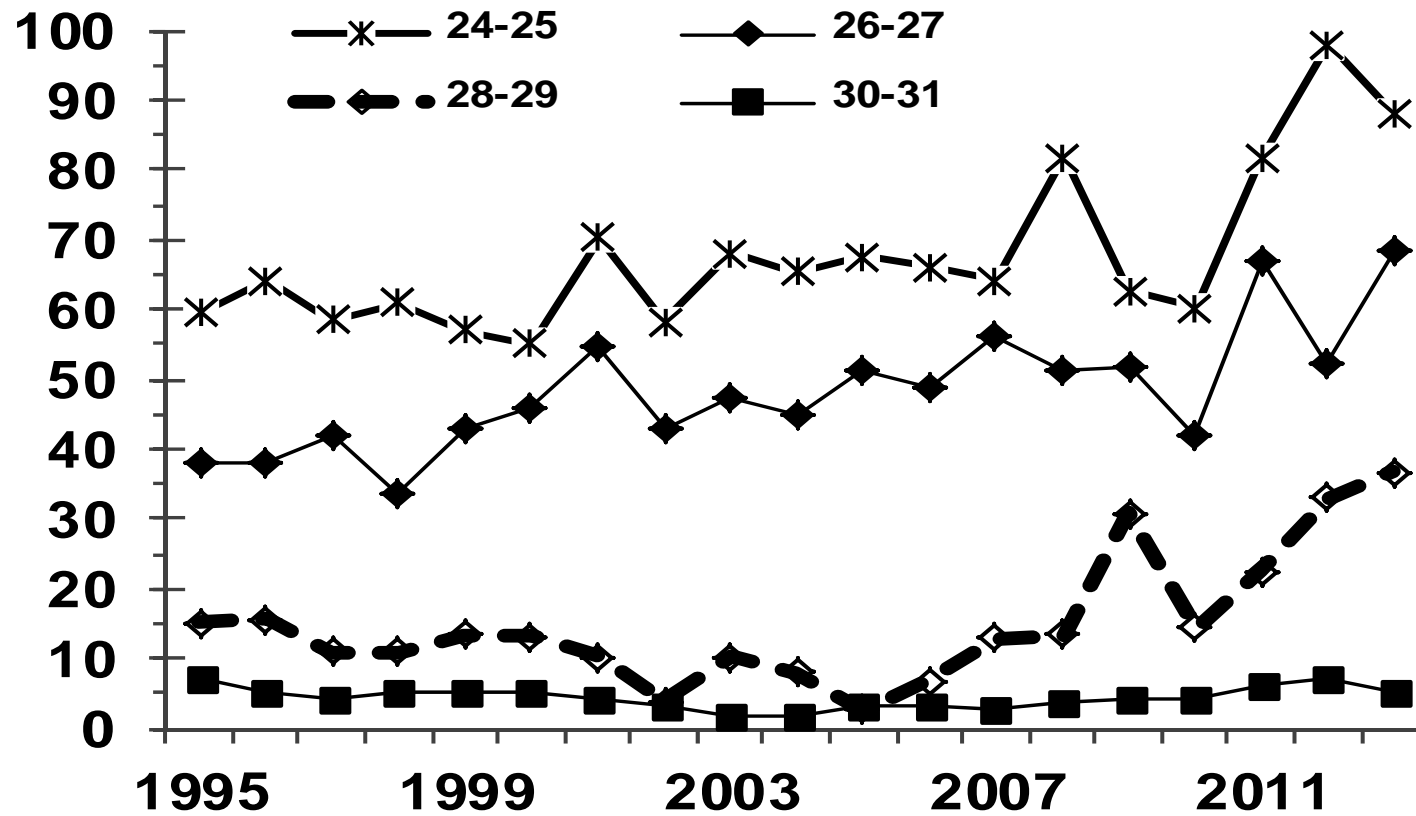


26-27 weeks gestation

# Figure 15: Severe (G3-4) IVH at 24-27 weeks 1995-2013

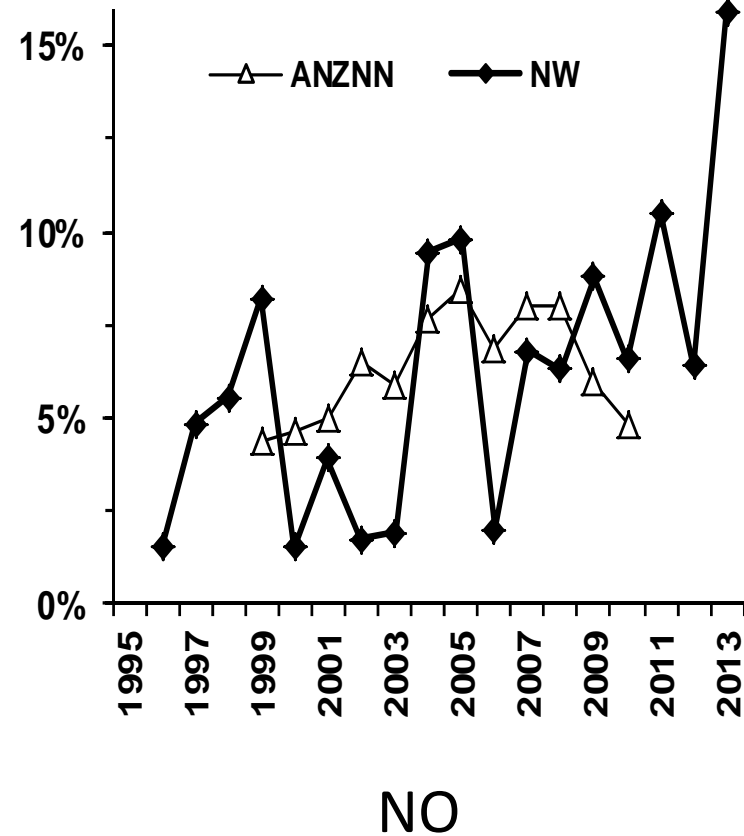
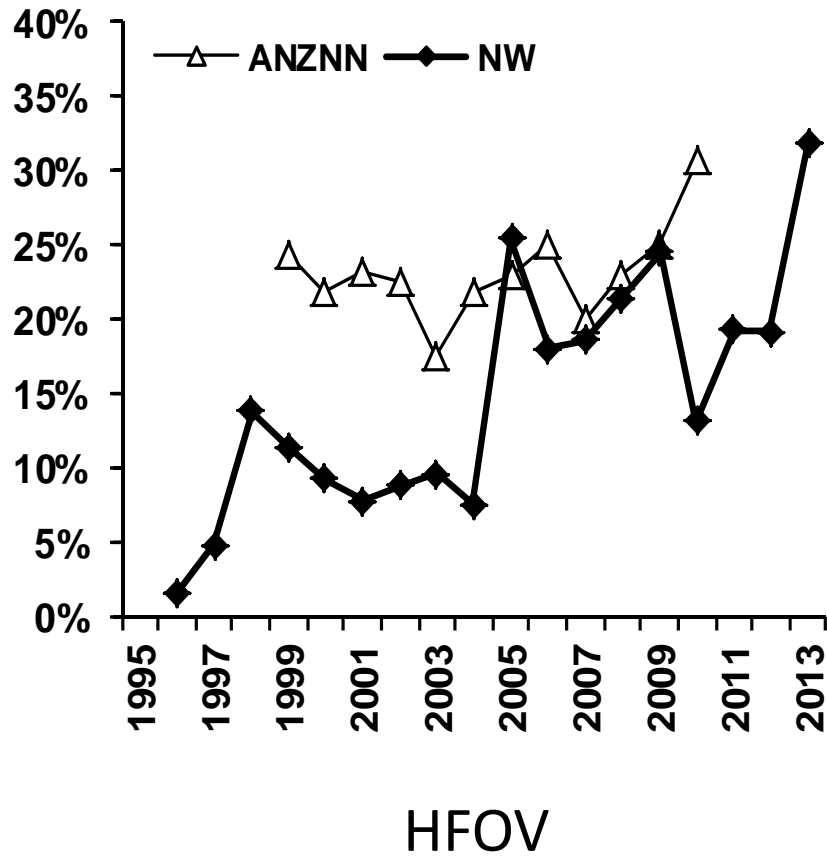


# Figure 21: Median days on any ventilation NWH 1995-2013

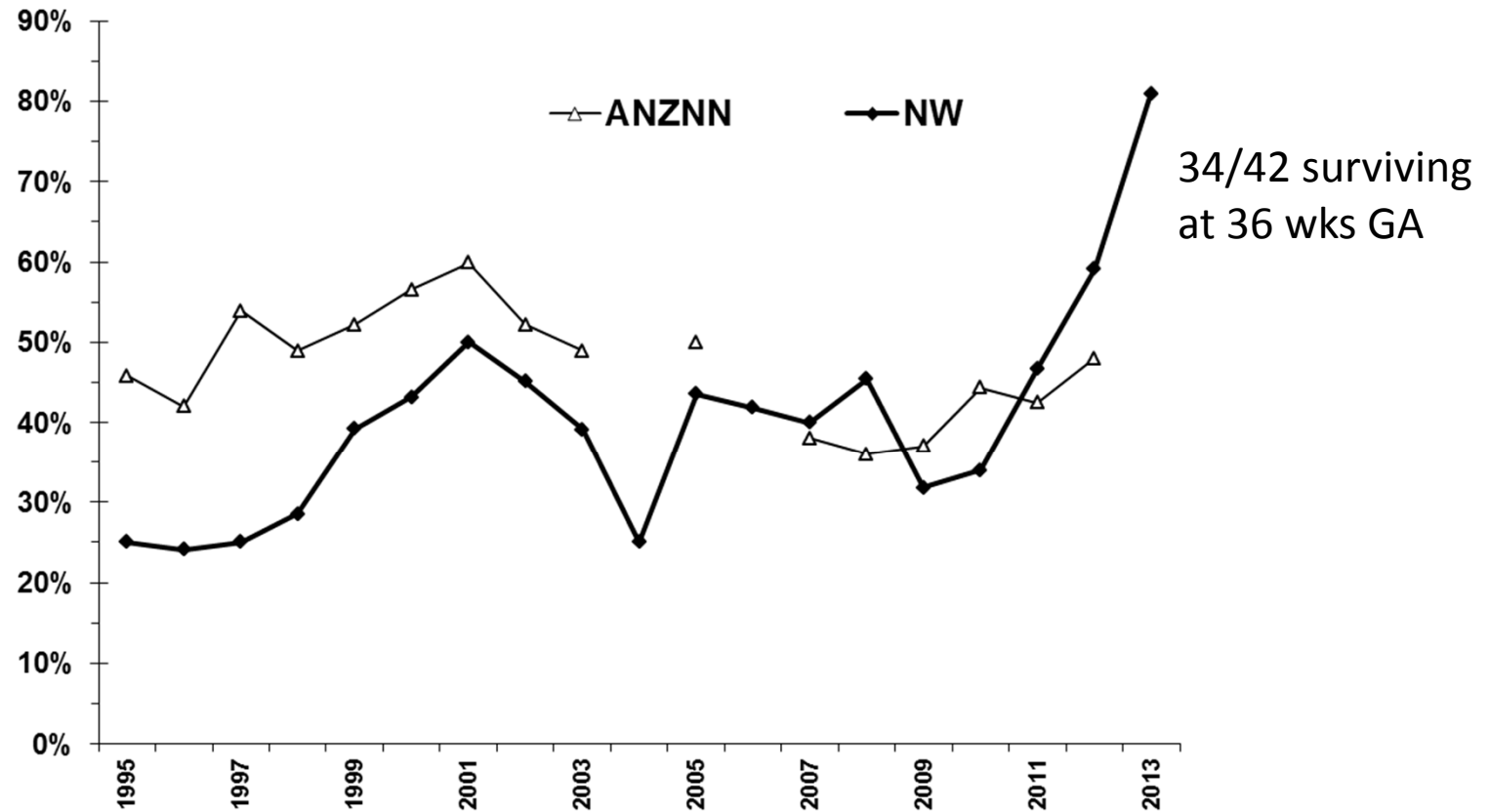




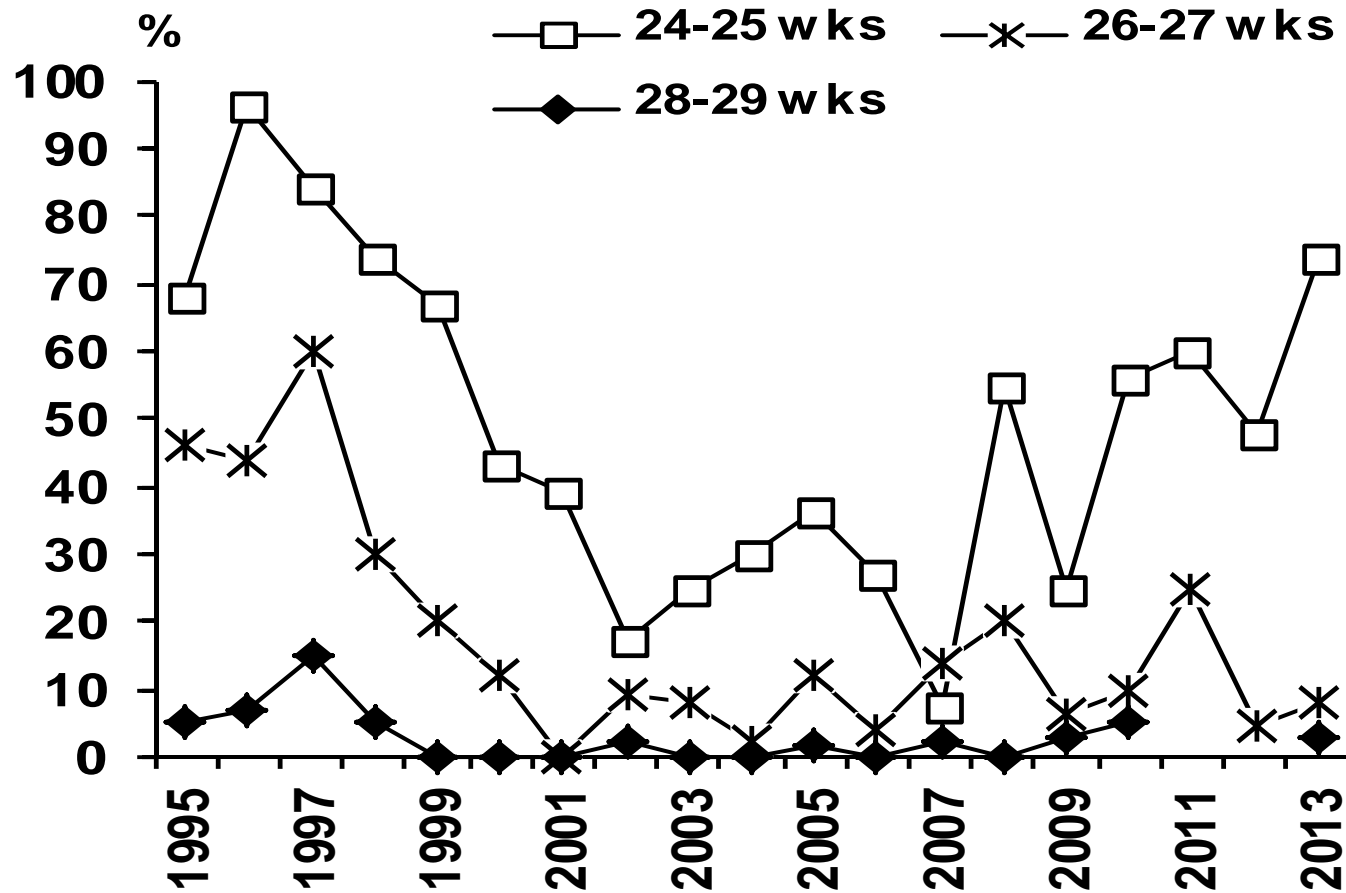
**Figure 35: HFOV and NO at 24-27 (ANZNN assigned babies) NWH 1995-2013**



# Chronic lung disease at 24-27weeks NWH 1995-2013

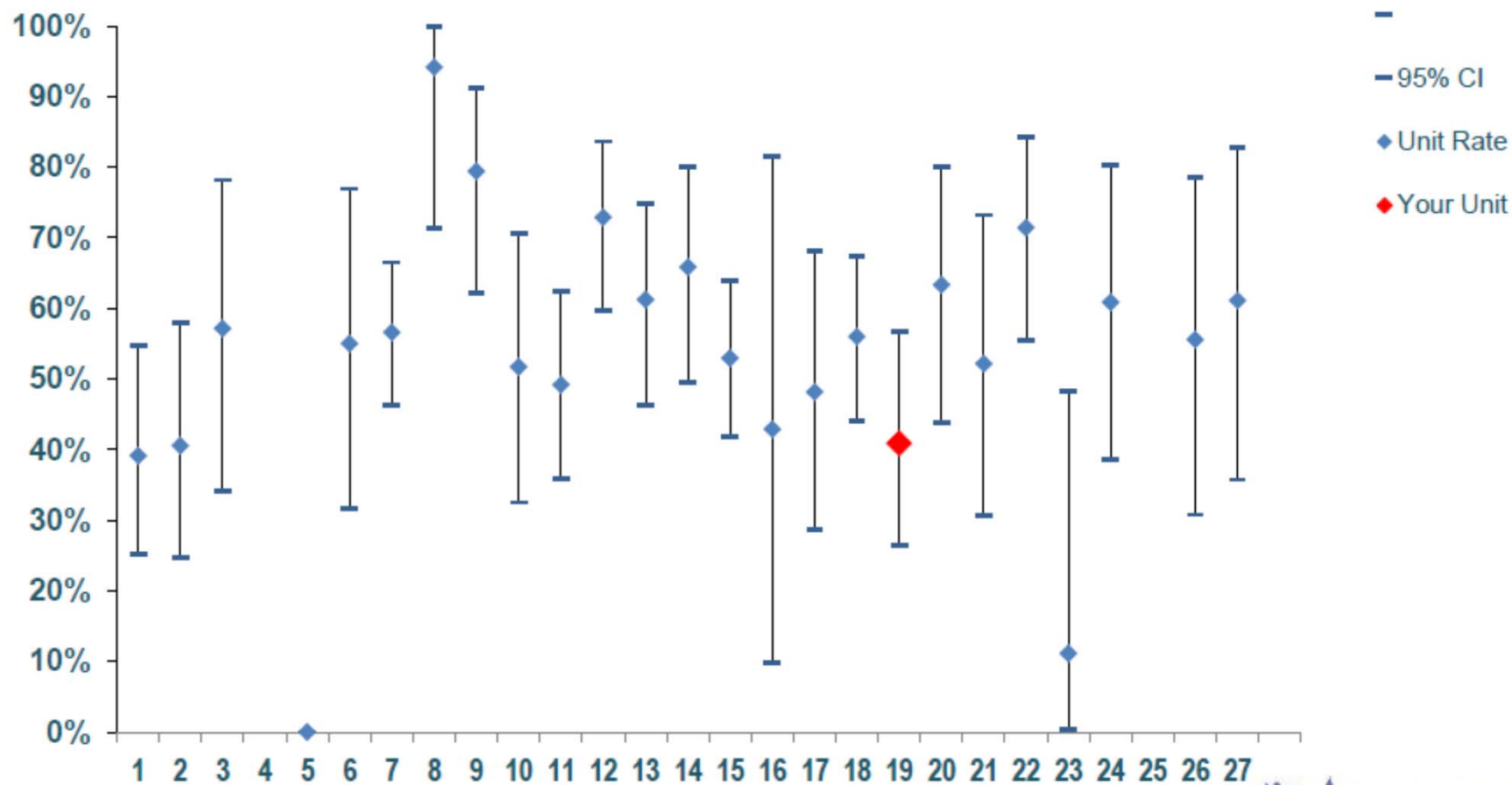


**Figure 49: Percentage receiving postnatal dexamethasone by gestational age (ANZNN alive at one week <32wks) NWH 1995-2013**



# Chronic lung disease

Babies <28 weeks who survived to 36 weeks PMA



# Median ventilation days by gestational age among (ventilated) inborn survivors NWH 2013

