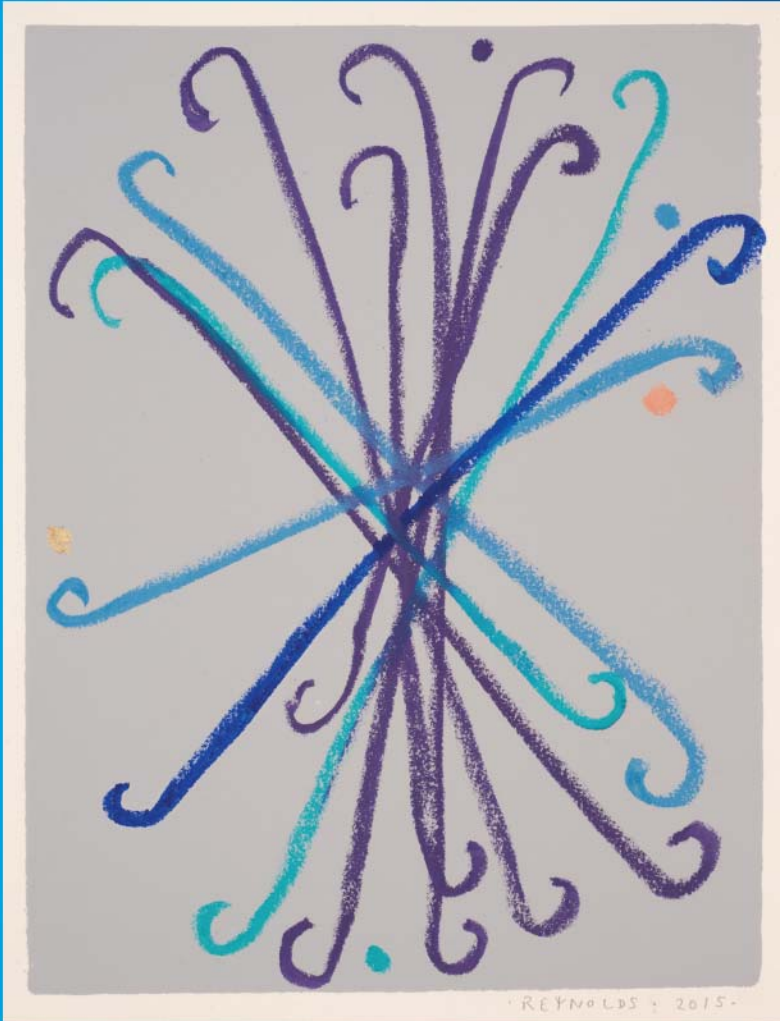


National Women's Annual Clinical Report
2014

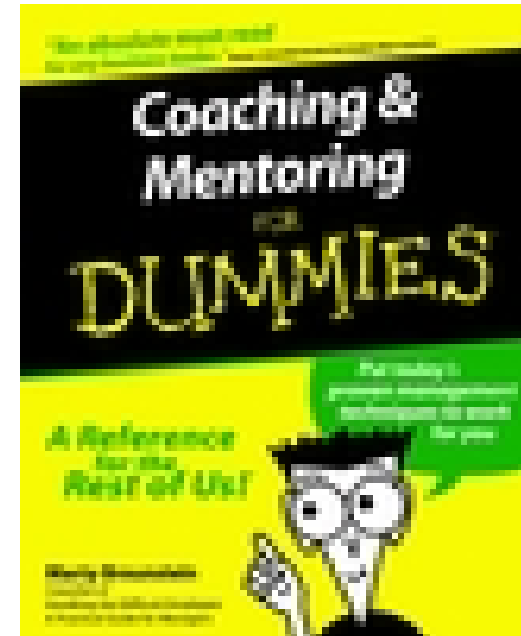


Auckland Review 2015



My Role

- Give feedback,
 - Ask how the participant felt they had performed
 - what they did well
 - what they would like to change
 - Reflect on the positives
 - Constructively introduce areas for improvement
 - End on a positive

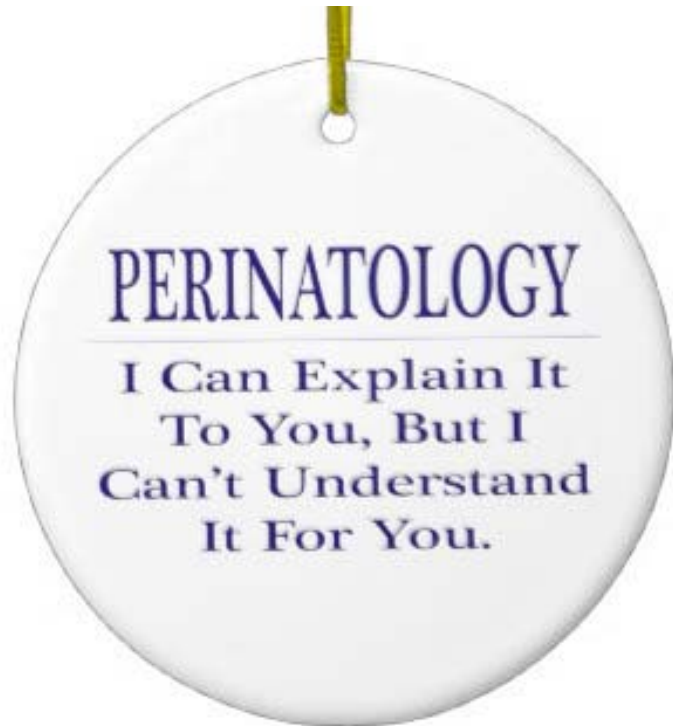




Jump outside the box
—
be a bit controversial

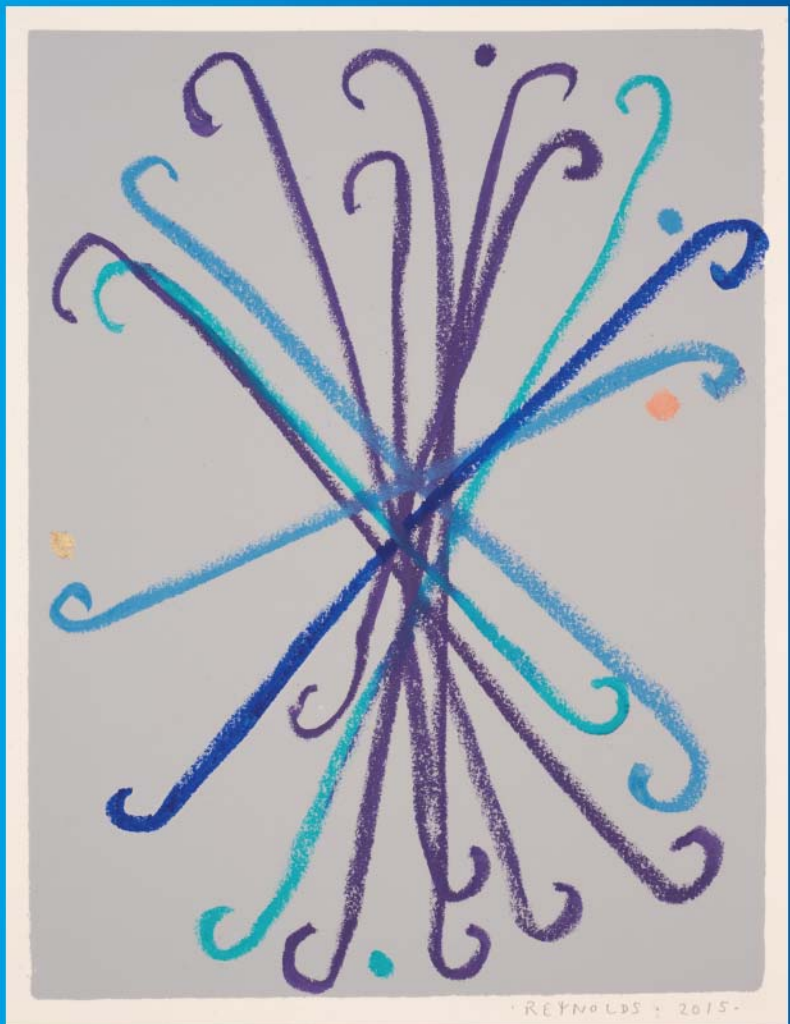
What I love about this report

- True perinatal approach



I AM A
PERINATOLOGIST
I DON'T BELIEVE
IN MIRACLES...
I RELY ON THEM

National Women's Annual Clinical Report 2014



What I love about this report

- True perinatal approach
- Includes Consumers as an integral part
- Very timely
- Comprehensive

First impressions - Obstetric

- Big unit 7,500 deliveries
- Reduction in preterm birth – fantastic if real
Is this a national trend
are there population data
- Pleasing to see more births in 38th and 39th week
good obstetric practice
- Second most common reason for caesarean delivery was “maternal request”

Conflict between consumer request and good clinical care.....

- Mode and place of delivery
- Birth plans
- Vitamin K
- Childhood immunisation
- Tongue tie

First Impressions Neonatal Care

- Exec Summary. 46 notes for maternity,
4 for neonatology,
25 Gynae, then another
5 Newborn.
- <32/40 172 infants 90% inborn – something is working well.

Weight criteria for neonatal data

- History repeating and repeating and repeating
- 5.2 Small and large for gestational age babies
- <1500 gm birthweight cohort.....

Excess

Excluded

Girls

Boys

IUGR

LGA

Indian

Polynesian

Workload data.....

Figure 87: Occupancy (baby days per year) of NICU by gestational age 1999-2014

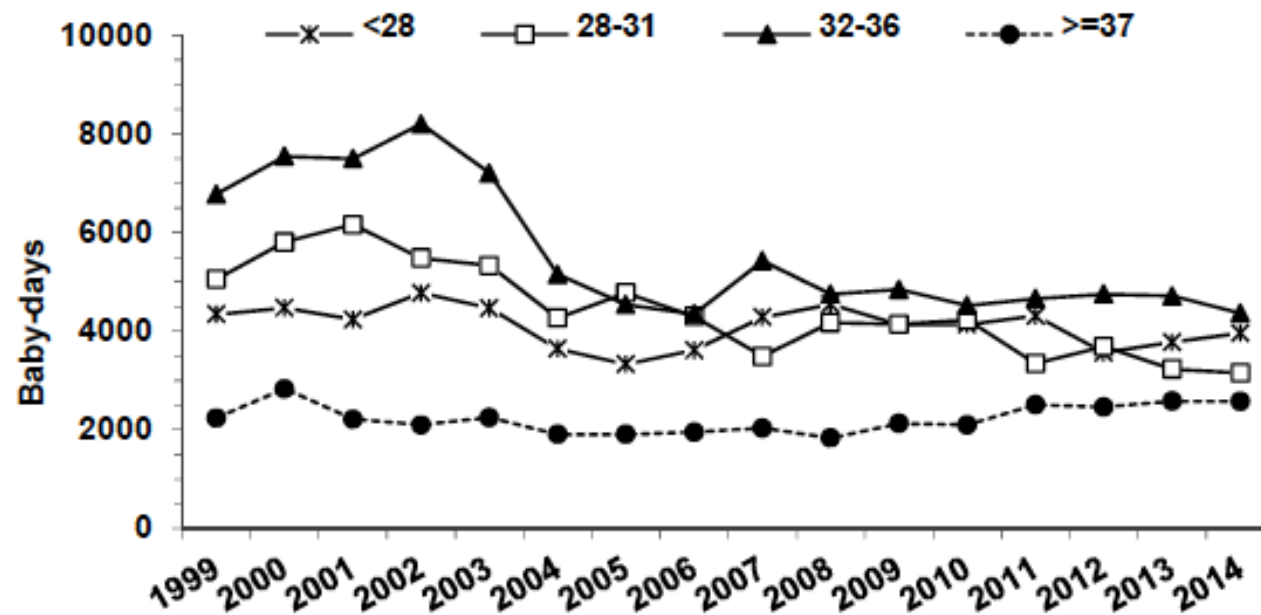


Figure 2 KEMH Total Occupancy (based on a capacity of 92 beds)

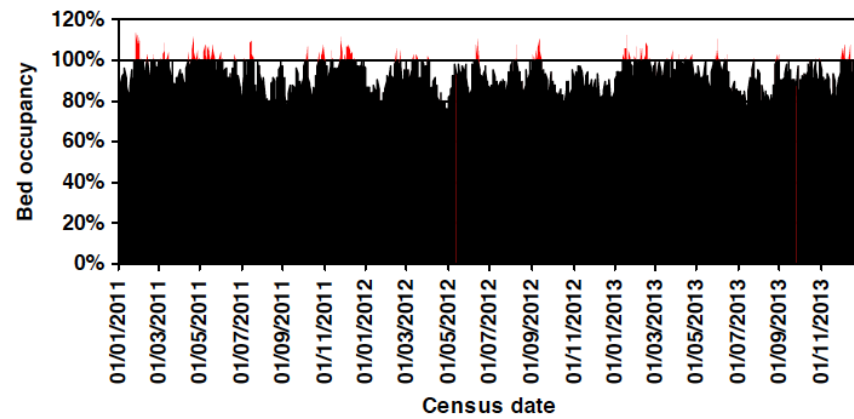
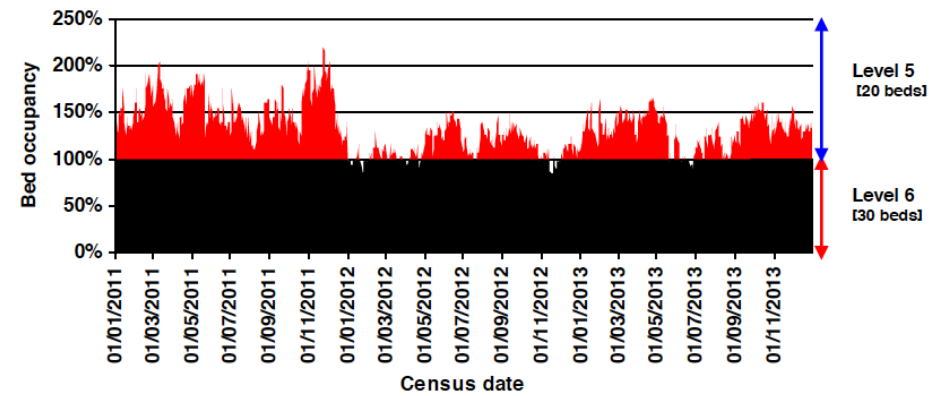


Figure 3 KEMH ICN Occupancy



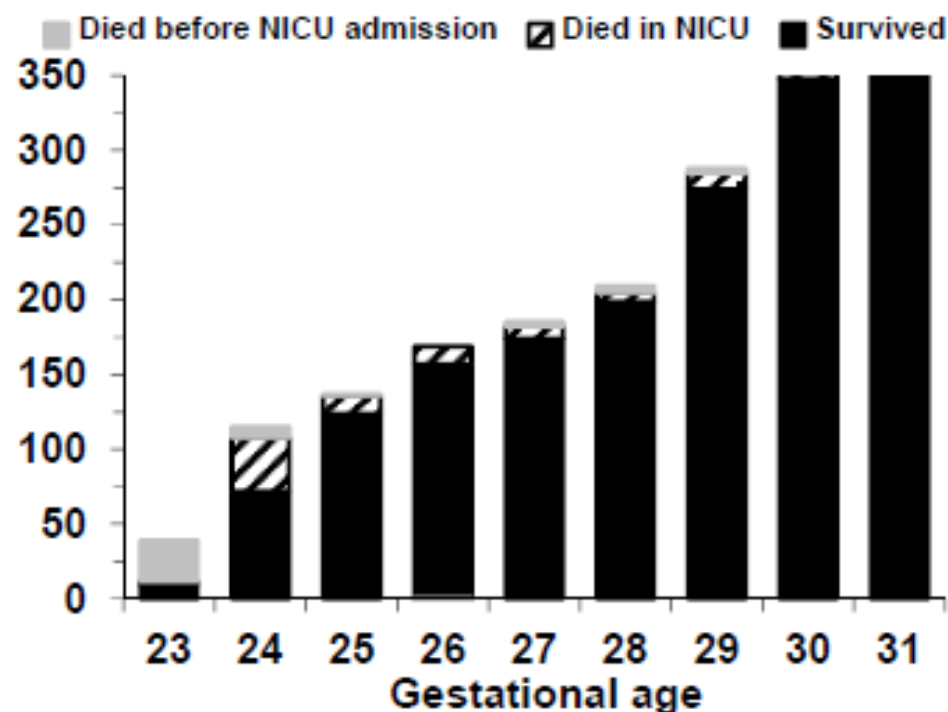
Why no 23 week infants?

Table 71: Characteristics of <32 week or <1500g babies cared for at NWH NICU by ANZNN status 2014

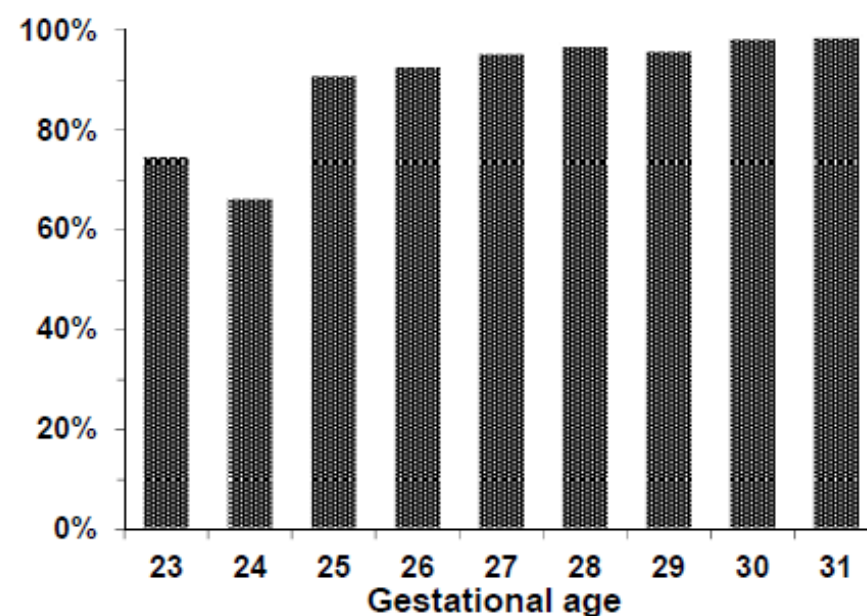
<32 weeks or <1500g						
	Total N=172		ANZNN n=165		Non ANZNN n=7	
Gestation (weeks)	n	%	n	%	n	%
<24	0		0		0	
24-25	23	13.4	20	12.1	3	42.9
26-27	29	16.9	28	17.0	1	14.3
28-29	28	16.3	28	17.0	0	
30-31	71	41.3	68	41.2	3	42.9
32-36	21	12.2	21	12.7	0	

	n %		FD risk*	n %		NND rate **	n %		Perinatal related mortality risk***
	n	%		n	%		n	%	
<24 weeks	47	0.6	4.0	17	45.9	1000.0	47	48.5	6.2
24-27 weeks	62	0.8	1.9	5	13.5	104.2	19	19.6	2.5

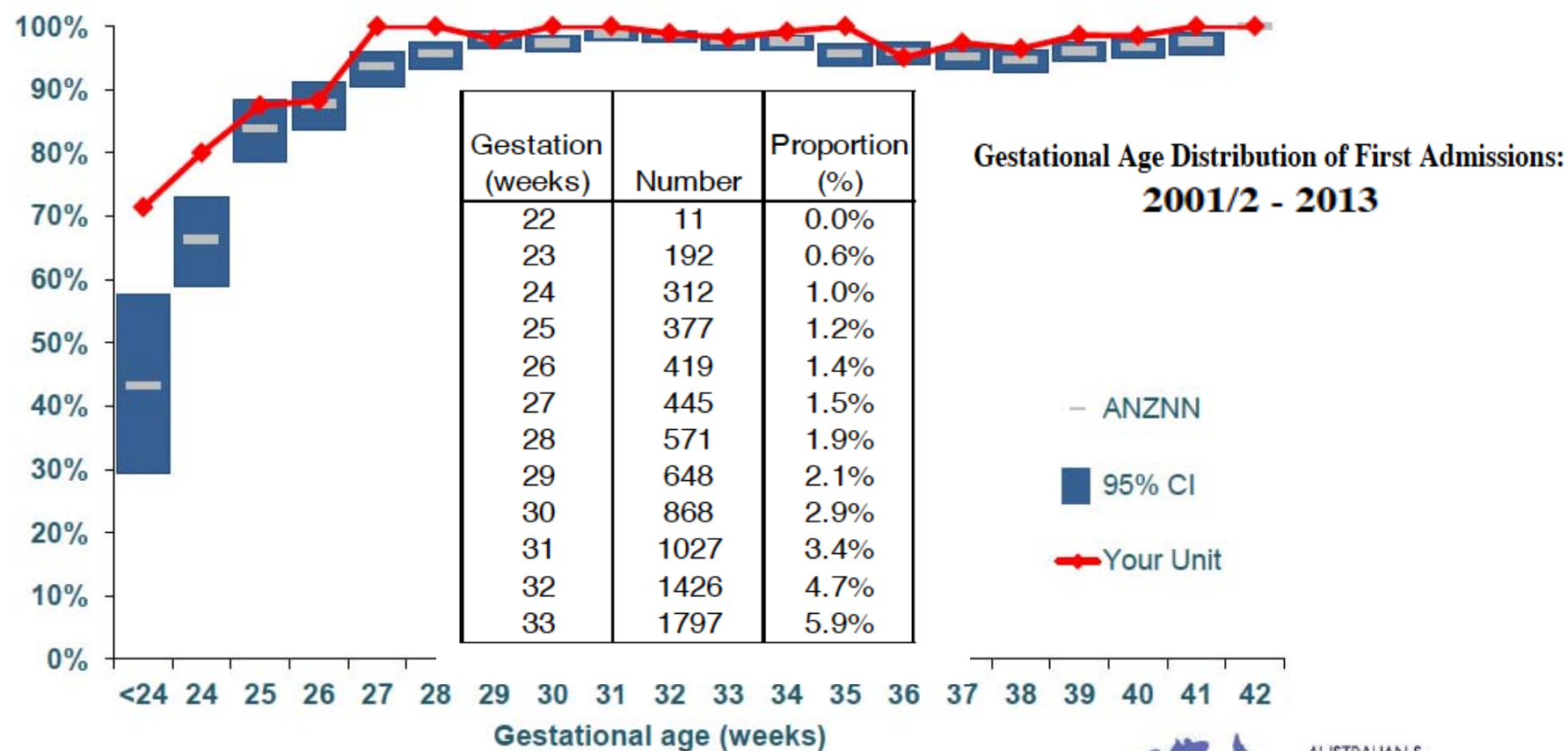
Figure 124: Numbers of live inborn babies 23 to 31 weeks gestation NWH 2003-2014 (n=1912)



Survival of live inborn babies admitted to NICU 2003-2014 (n =1837)

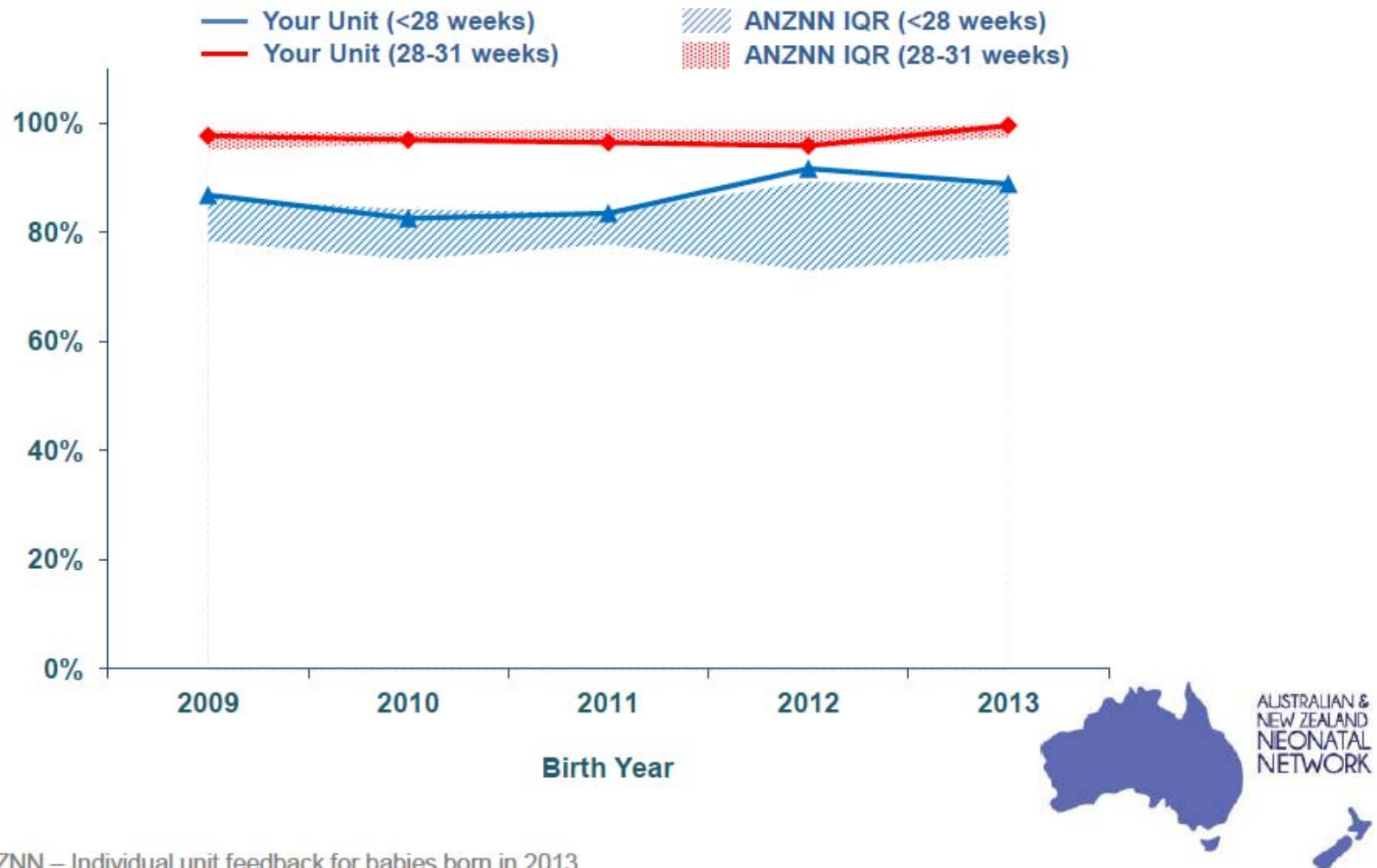


Survival by gestational age



Survival, 2009-2013

Babies born at <32 weeks



ANZNN – Individual unit feedback for babies born in 2013

How should we benchmark this data.....



Figure 127: Survival at 24-25 weeks gestation compared with ANZNN data NWH 1995-2014

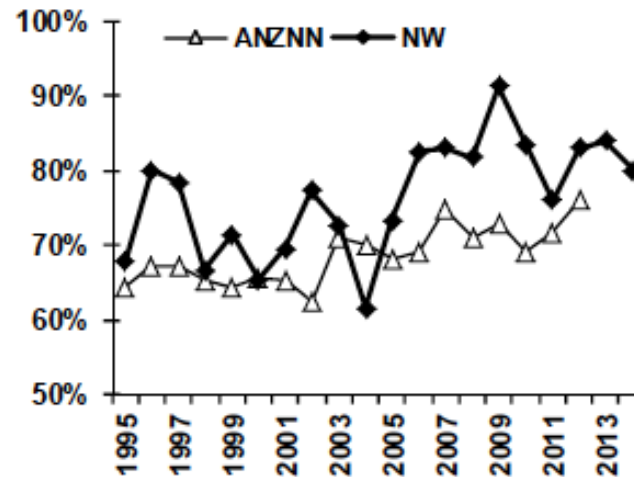


Figure 128: Survival at 26-27 weeks gestation compared with ANZNN data NWH 1995-2014

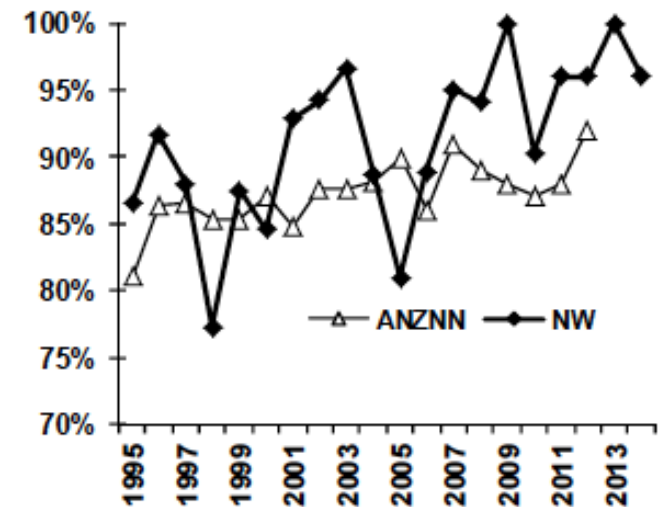


Figure 100: Severe (G3-4) IVH at 24-27 weeks 1995-2014

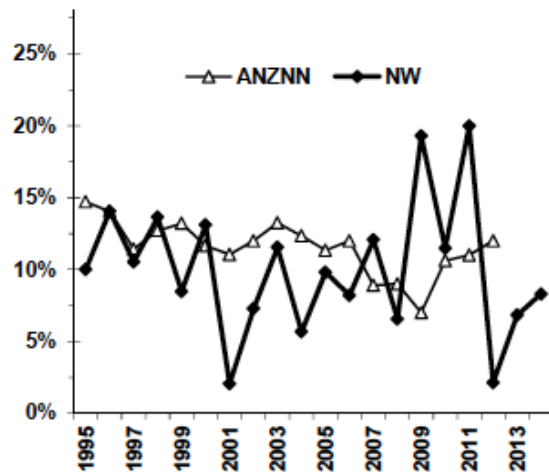


Figure 102: Severe (G3-4) IVH at 28-31 weeks 1995-2014

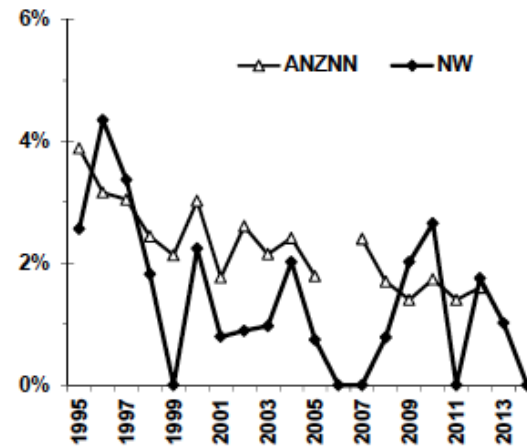


Figure 131: Chronic lung disease at 24-27 weeks NWH 1995-2014

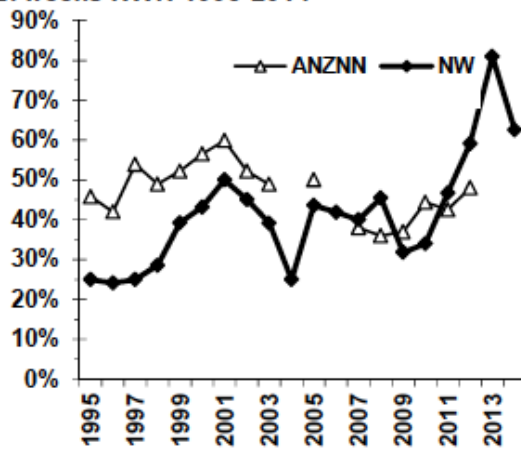
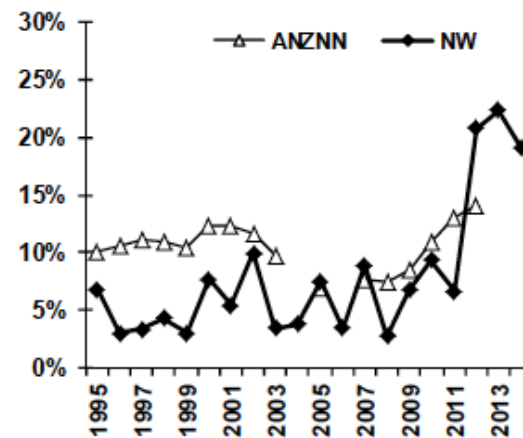
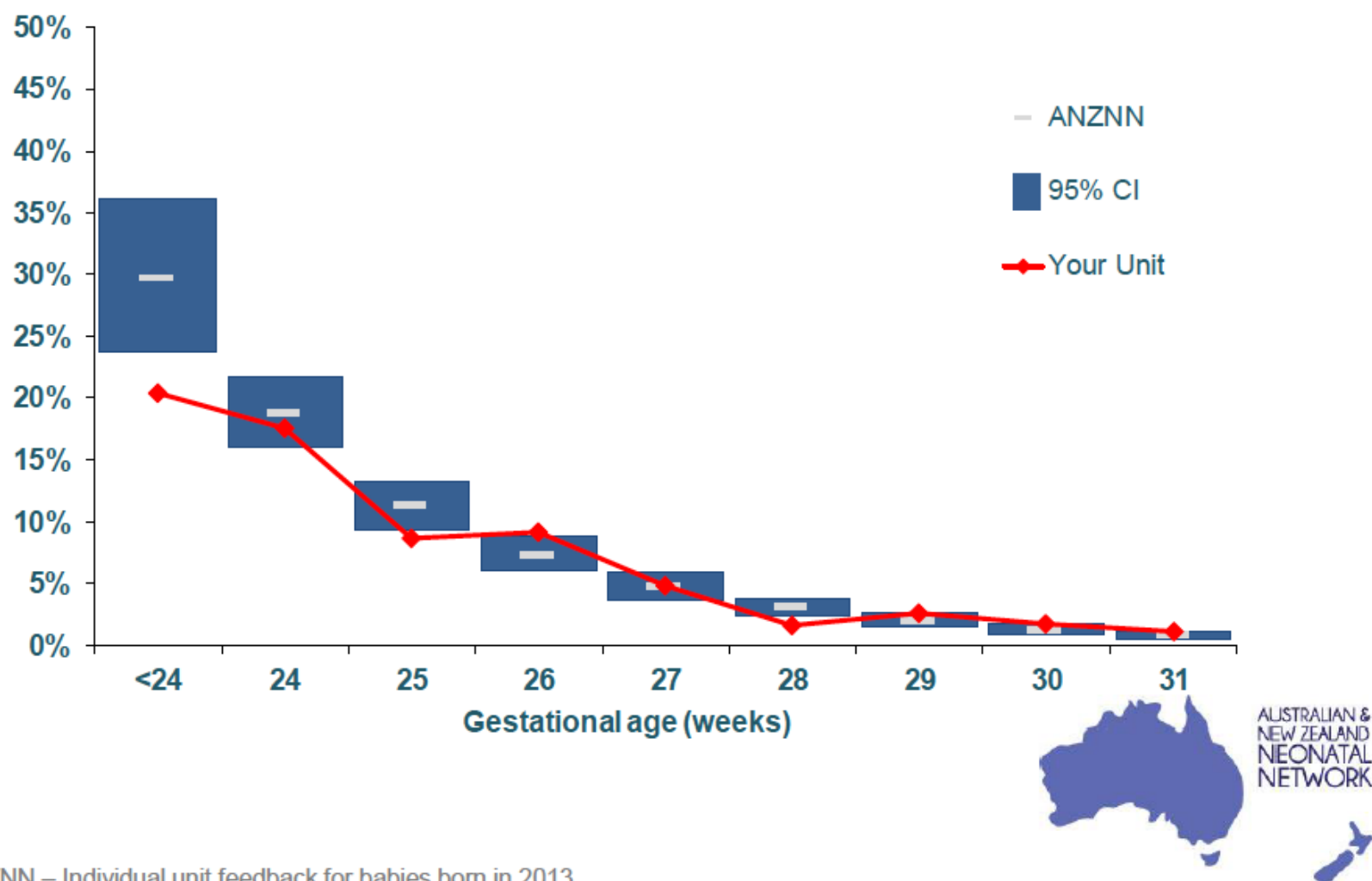


Figure 132: Chronic lung disease at 28-31 weeks NWH 2014



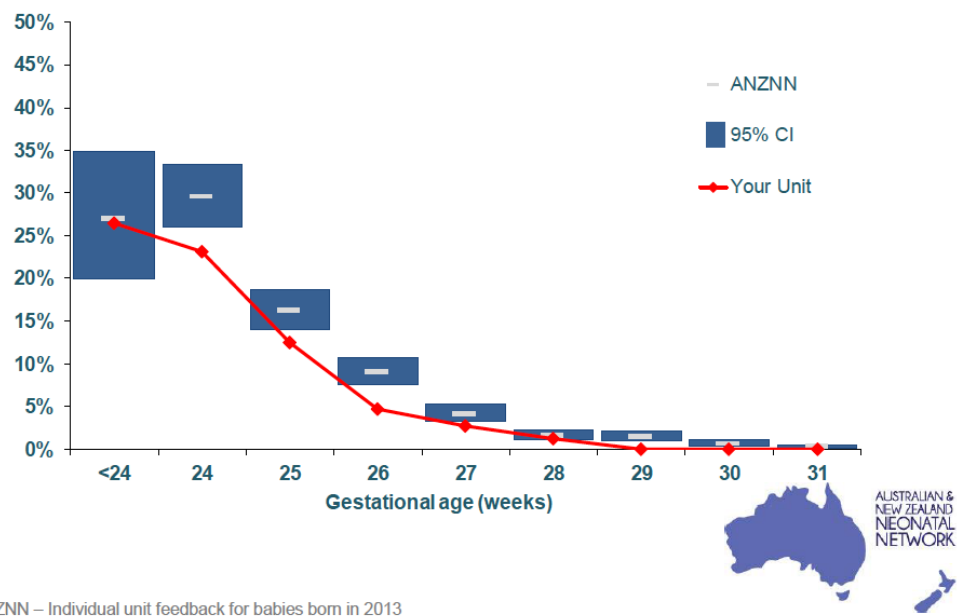
Severe intraventricular haemorrhage, 2009-2013

Babies who survived to day 3



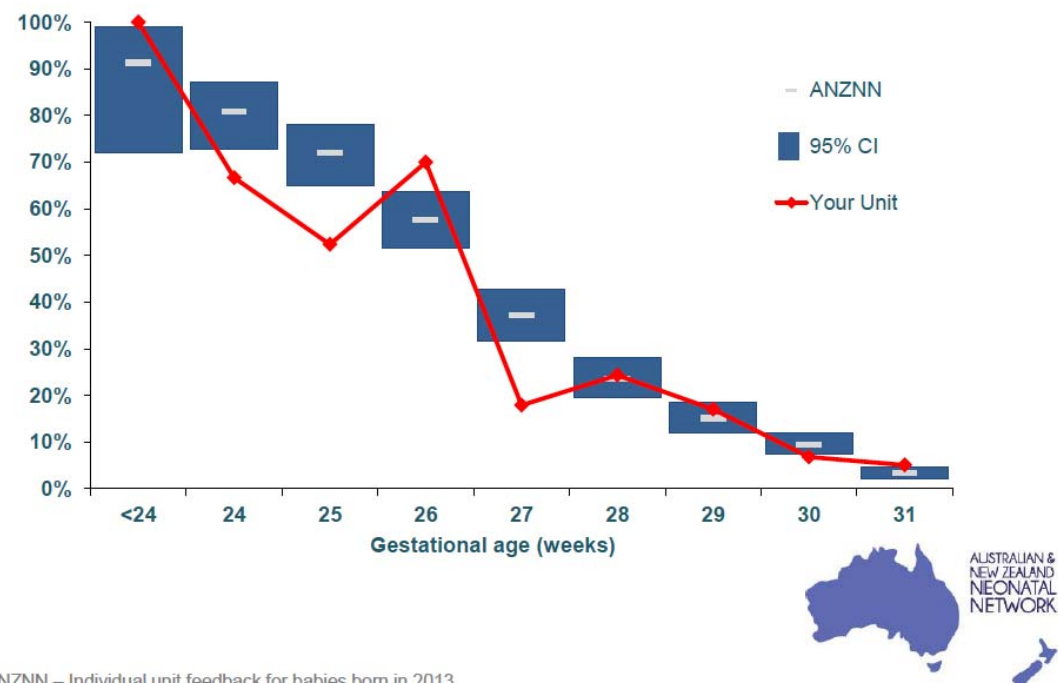
Severe retinopathy of prematurity, 2009-2013

Babies who survived to day 3



ANZNN – Individual unit feedback for babies born in 2013

Chronic lung disease by gestational age



ANZNN – Individual unit feedback for babies born in 2013

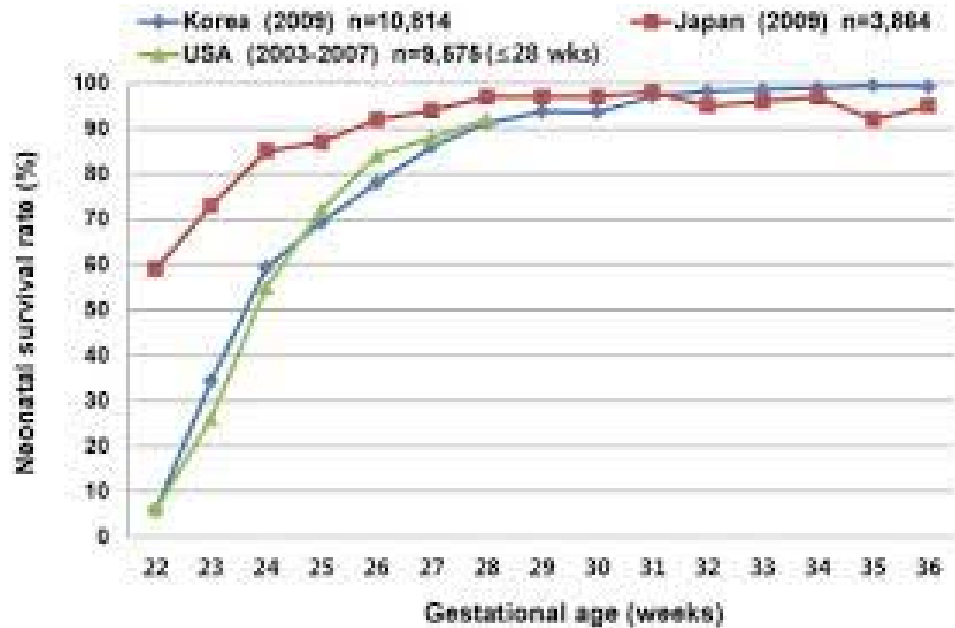
Numerator



Denominator

GA stratified
Inborn
AGA
No anomalies
Antenatal care
Antenatal steroids
No Early onset sepsis

NRN Neonatal Research Network

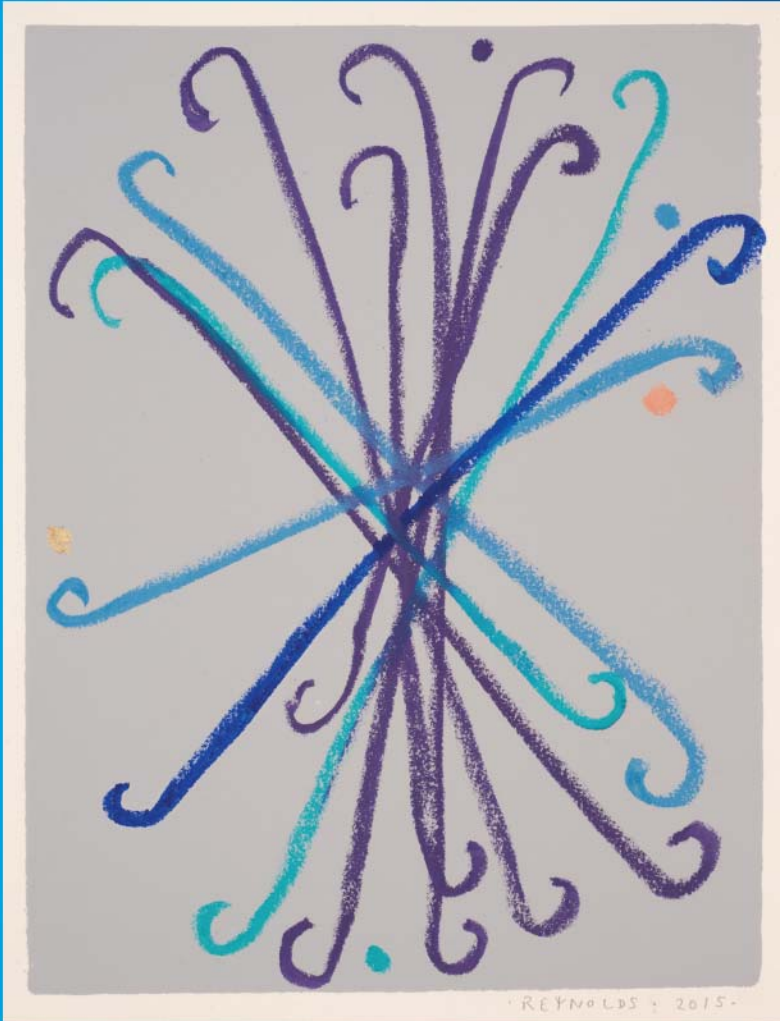


The Canadian Neonatal Network™



VON Vermont Oxford NETWORK

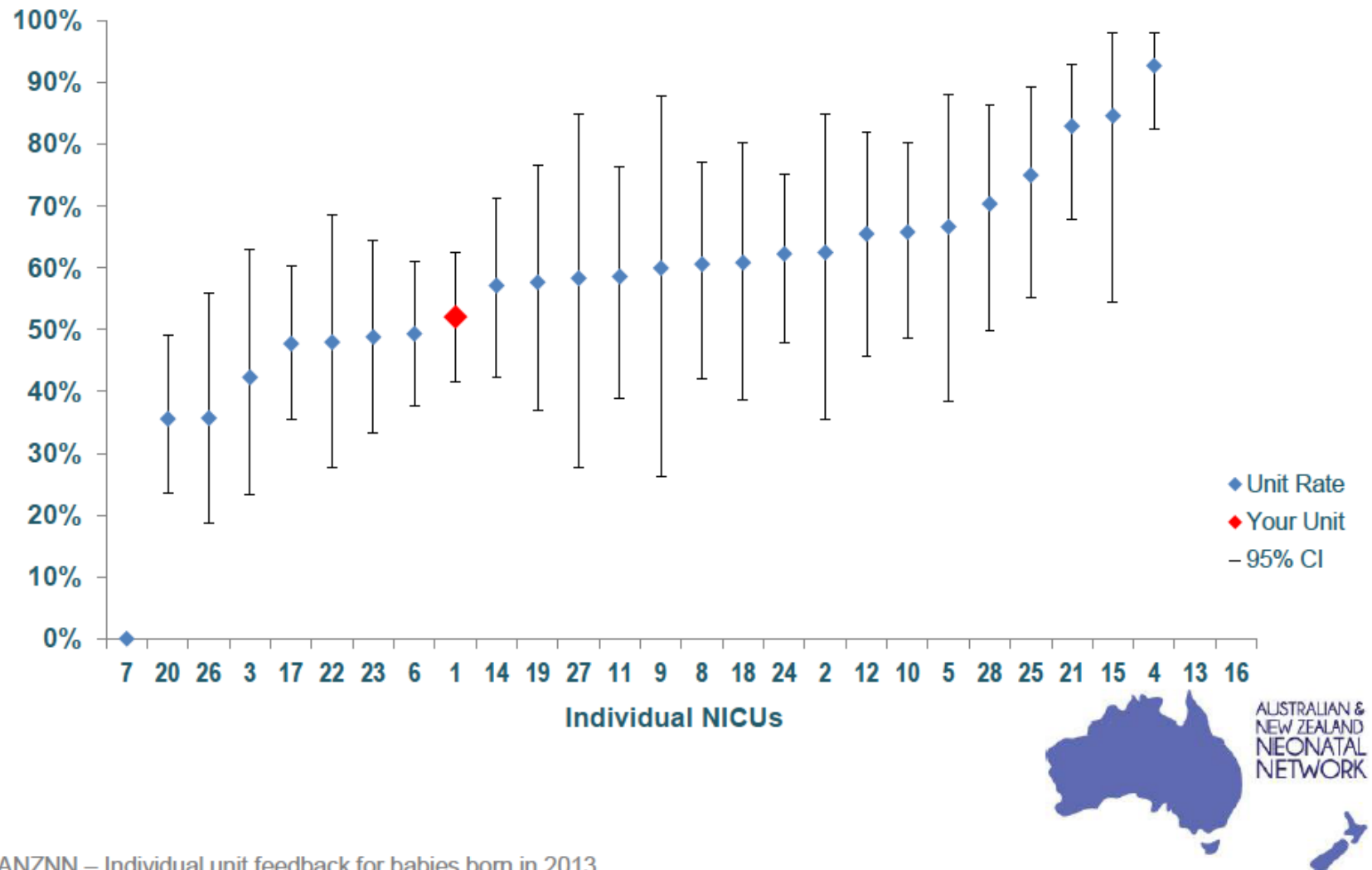
National Women's Annual Clinical Report
2014



Thankyou

Chronic lung disease

Babies <28 weeks who survived to 36 weeks PMA



First Impressions Perinatal Mortality

Social impacts.....

- The links between race, adverse social circumstances and perinatal mortality stand out clearly.
-