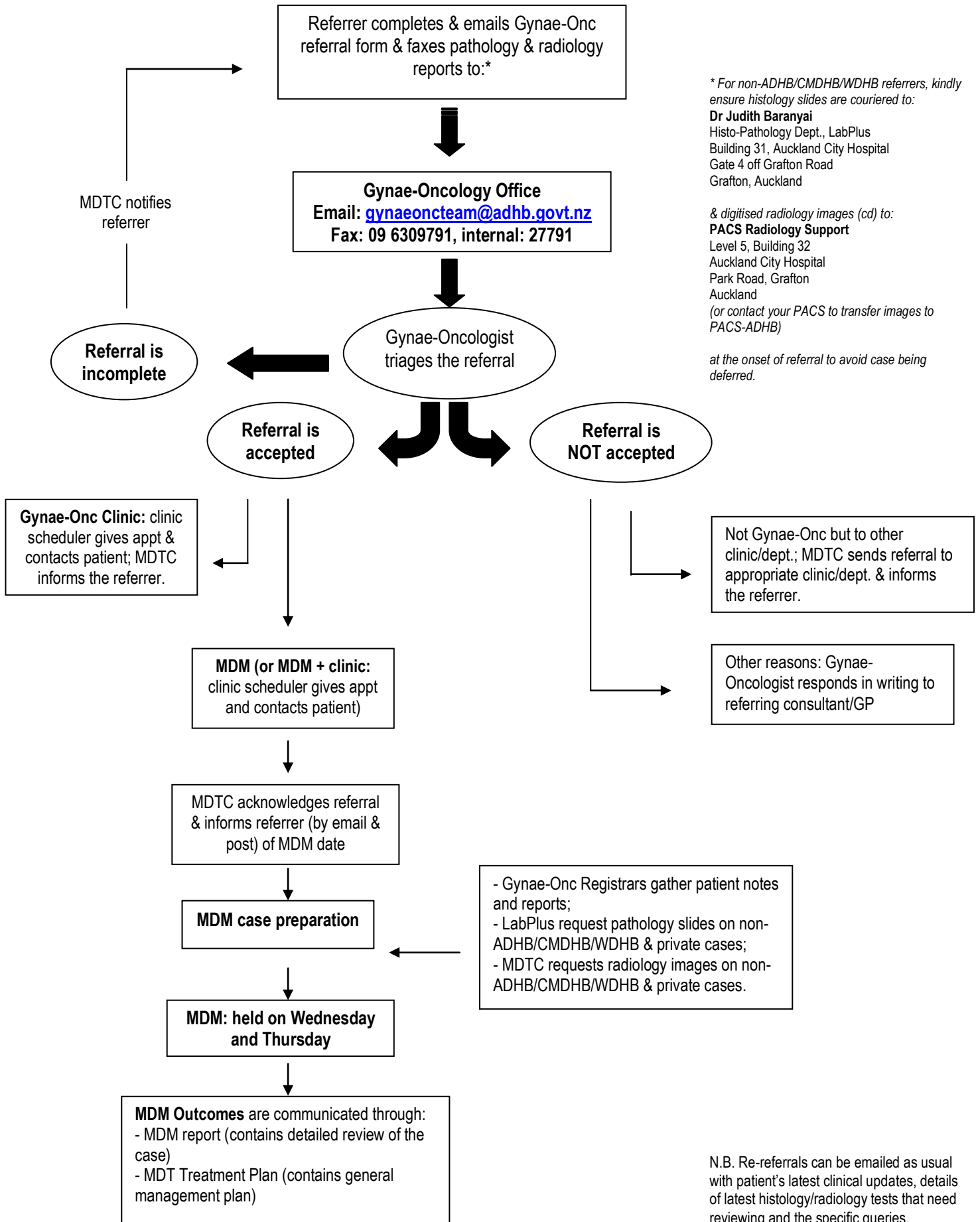


Gynaecological Oncology Referral Pathway: for Medical Practitioners

This guide is intended to assist referring consultants/registrars/GPs on multidisciplinary meeting process.



* For non-ADHB/CMDHB/WDHB referrers, kindly ensure histology slides are couriered to:
Dr Judith Baranyai
Histo-Pathology Dept., LabPlus
Building 31, Auckland City Hospital
Gate 4 off Grafton Road
Grafton, Auckland

& digitised radiology images (cd) to:
PACS Radiology Support
Level 5, Building 32
Auckland City Hospital
Park Road, Grafton
Auckland
(or contact your PACS to transfer images to PACS-ADHB)

at the onset of referral to avoid case being deferred.

Not Gynae-Onc but to other clinic/dept.; MDTC sends referral to appropriate clinic/dept. & informs the referrer.

Other reasons: Gynae-Oncologist responds in writing to referring consultant/GP

- Gynae-Onc Registrars gather patient notes and reports;
- LabPlus request pathology slides on non-ADHB/CMDHB/WDHB & private cases;
- MDTC requests radiology images on non-ADHB/CMDHB/WDHB & private cases.

N.B. Re-referrals can be emailed as usual with patient's latest clinical updates, details of latest histology/radiology tests that need reviewing and the specific queries.