

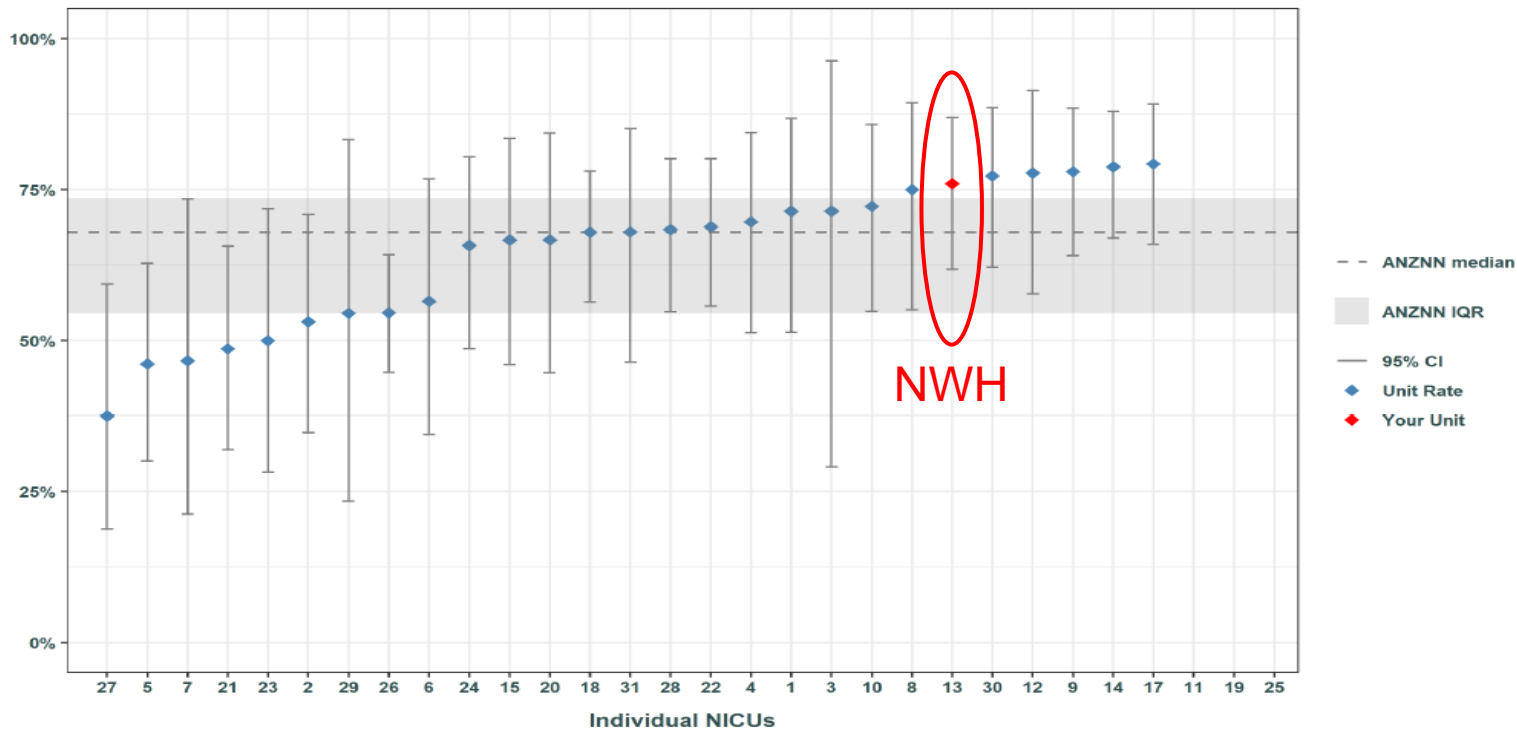
# Audit of Chronic Lung Disease at NWH

David Knight  
May 2021

# The problem: Latest unit feedback report from ANZNN

## Chronic lung disease

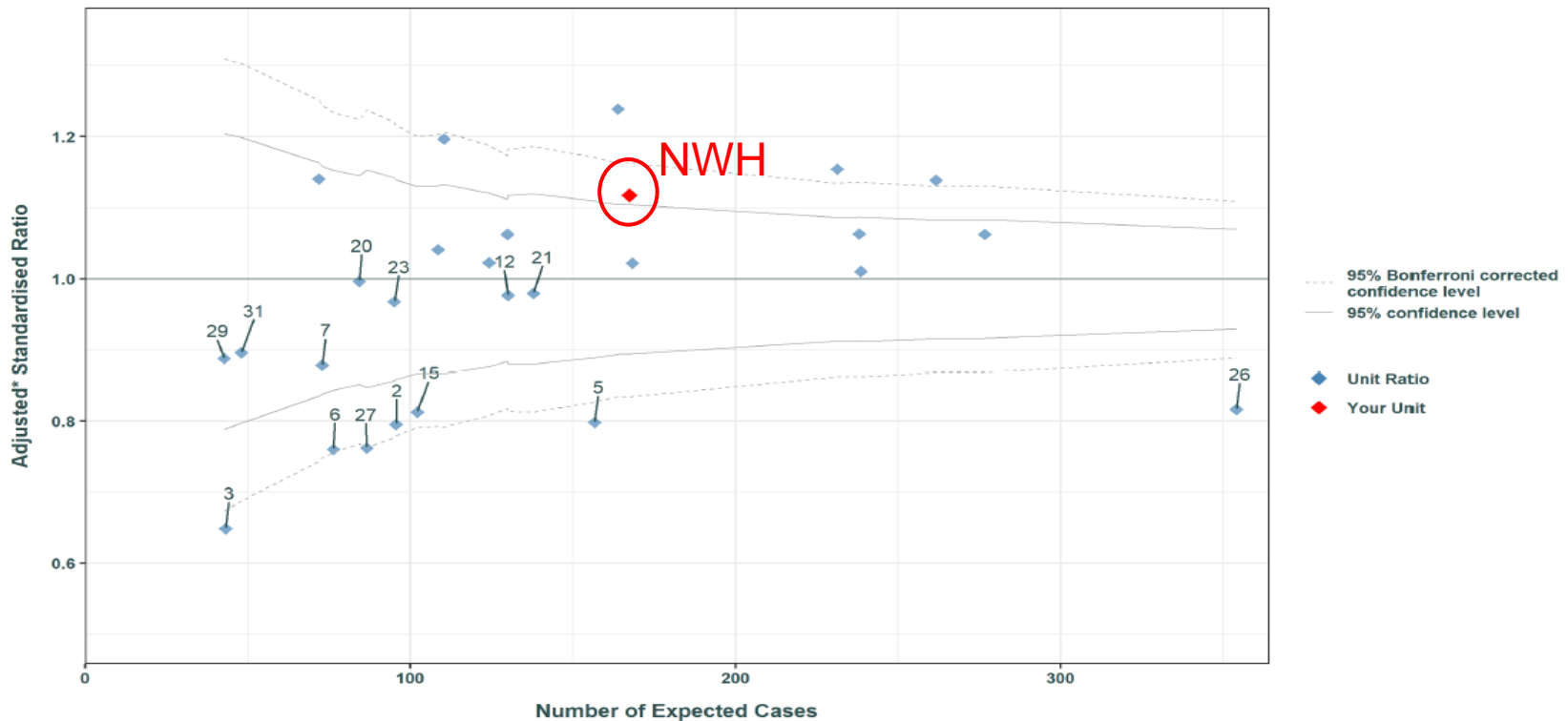
Babies <28 weeks who survived to 36 weeks PMA



# Latest unit feedback report from ANZNN

## Chronic lung disease, 2015-2019

Babies born at 23-28 weeks who survived to 36 weeks PMA



\*Adjusted for: GA, sex, SGA, Inborn status

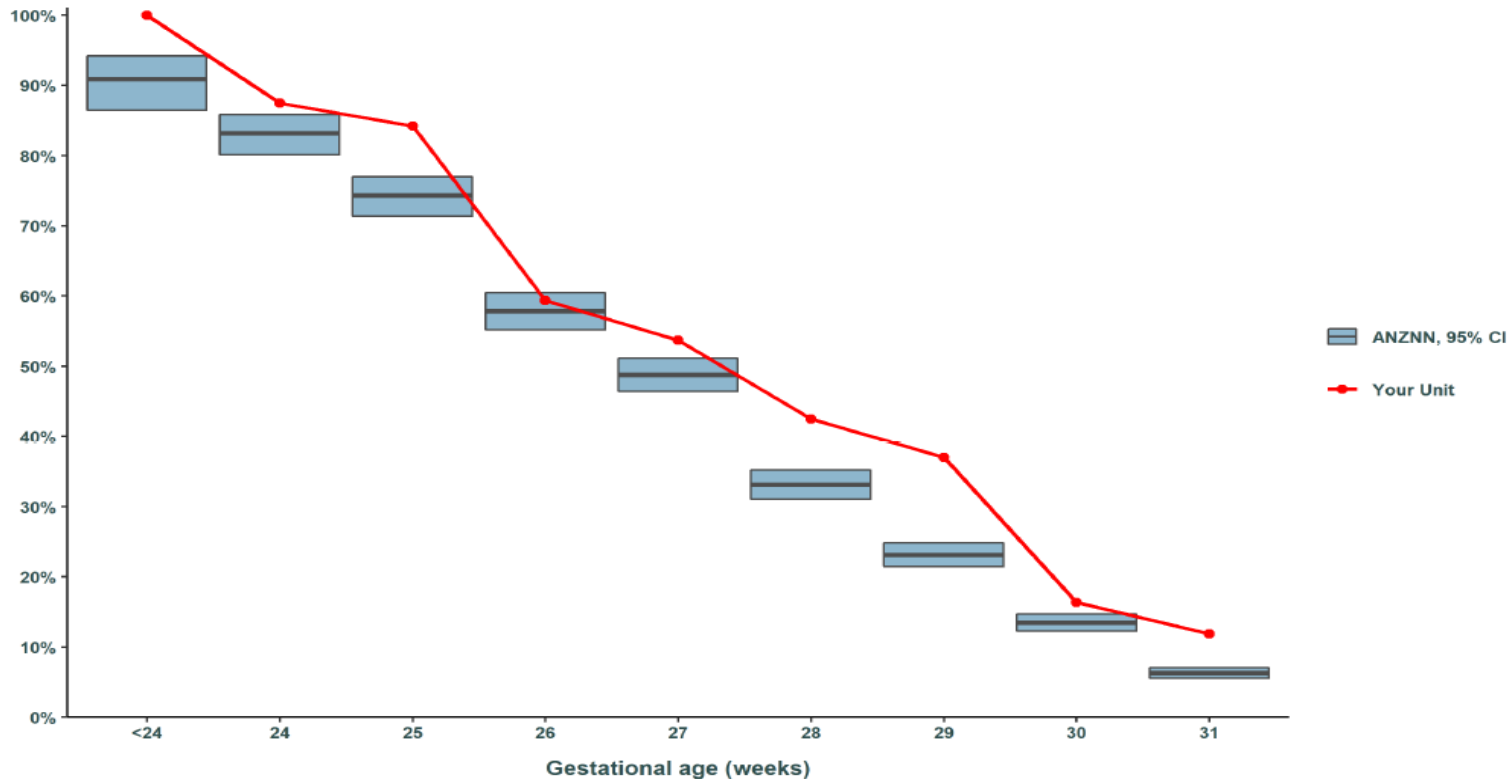


AUSTRALIAN &  
NEW ZEALAND  
NEONATAL  
NETWORK

# Latest unit feedback report from ANZNN

## Chronic lung disease by gestational age, 2015-2019

### Babies who survived to 36 weeks PMA



AUSTRALIAN &  
NEW ZEALAND  
NEONATAL  
NETWORK

# ANZNN definitions of CLD in <32 week babies

- CLD is needing either respiratory support or oxygen at 36 weeks PMA
- In 2016, it started collecting data on the type of respiratory support at 36 weeks PMA
- In 2016 it started asking for Shift and Walsh tests at 35-36 weeks PMA in babies <28 weeks gestation
  - But results not yet reported.
- CLD DAGNOSIS IS BASED ON TREATMENT CHOSEN, NOT DISEASE SEVERITY
- NWH incidence of CLD has INCREASED in last few years

# Method



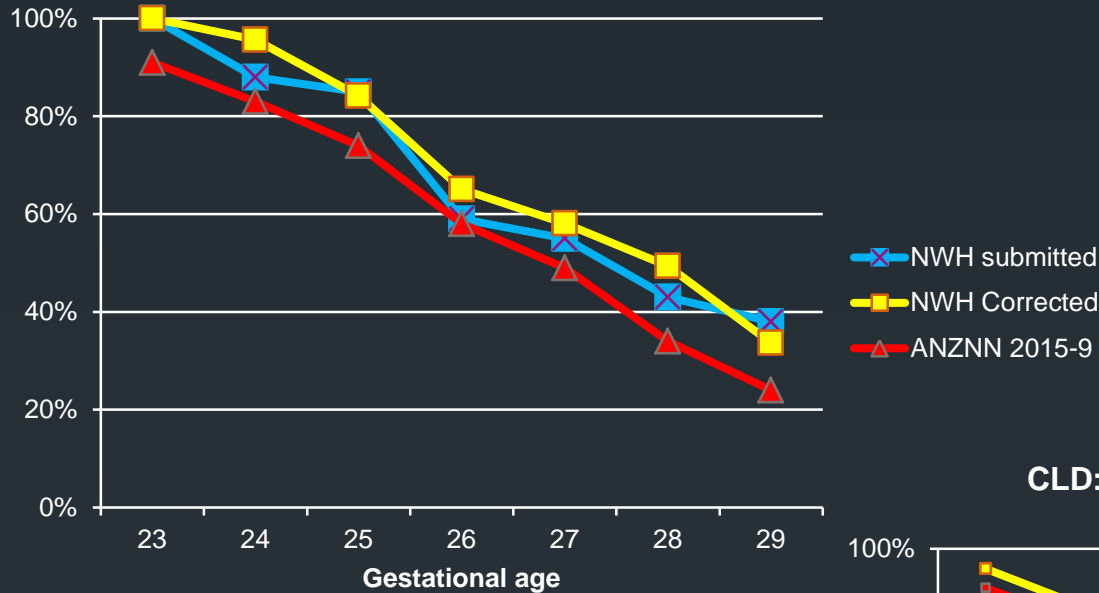
- Audit CLD data in babies born <30 weeks' gestation from 2007 to 2020
- Review charts to apply new ANZNN definitions to babies born before 2016
- Document  $\text{FiO}_2$  at 36 weeks (not collected by ANZNN)
- Look for errors in our ANZNN data collection
- Compare babies born in different epochs
  - Why has our incidence increased?
    - Is it the BABIES or the TREATMENT?

# How accurate is our CLD data submitted to ANZNN from 2007-2020

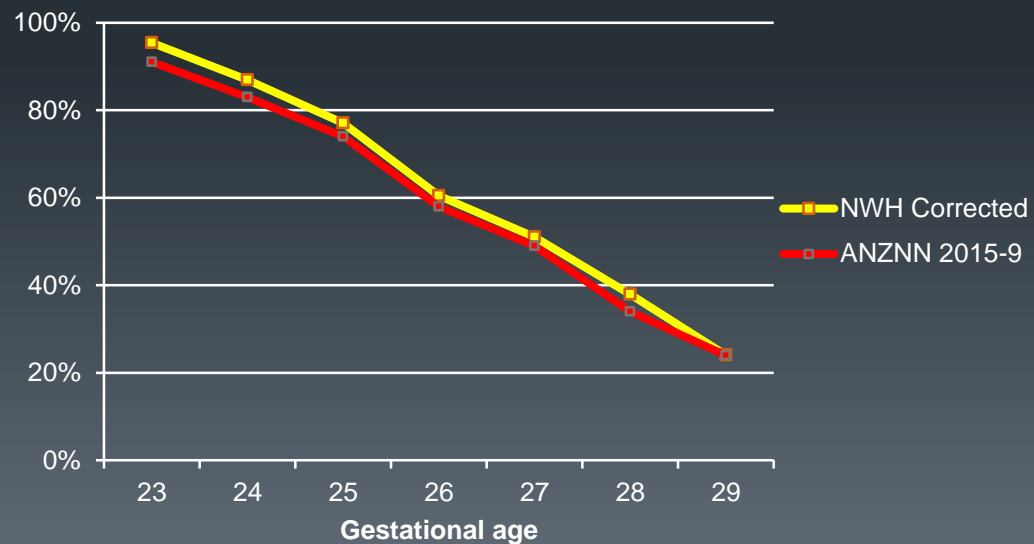
|                  | Submitted   | Correct     | Incorrect  | No data   |
|------------------|-------------|-------------|------------|-----------|
| CLD              | 481         | 452         | 27         | 2         |
| No CLD           | 725         | 536         | 136        | 53        |
| Died by 36 weeks | 114         | 114         | -          | -         |
| Missing data     | 18          | 8 had CLD   | 5 No CLD   | 5         |
| <b>Total</b>     | <b>1338</b> | <b>1102</b> | <b>176</b> | <b>60</b> |

# CLD vs Gestational age

## CLD: NWH vs ANZNN 2015-2019



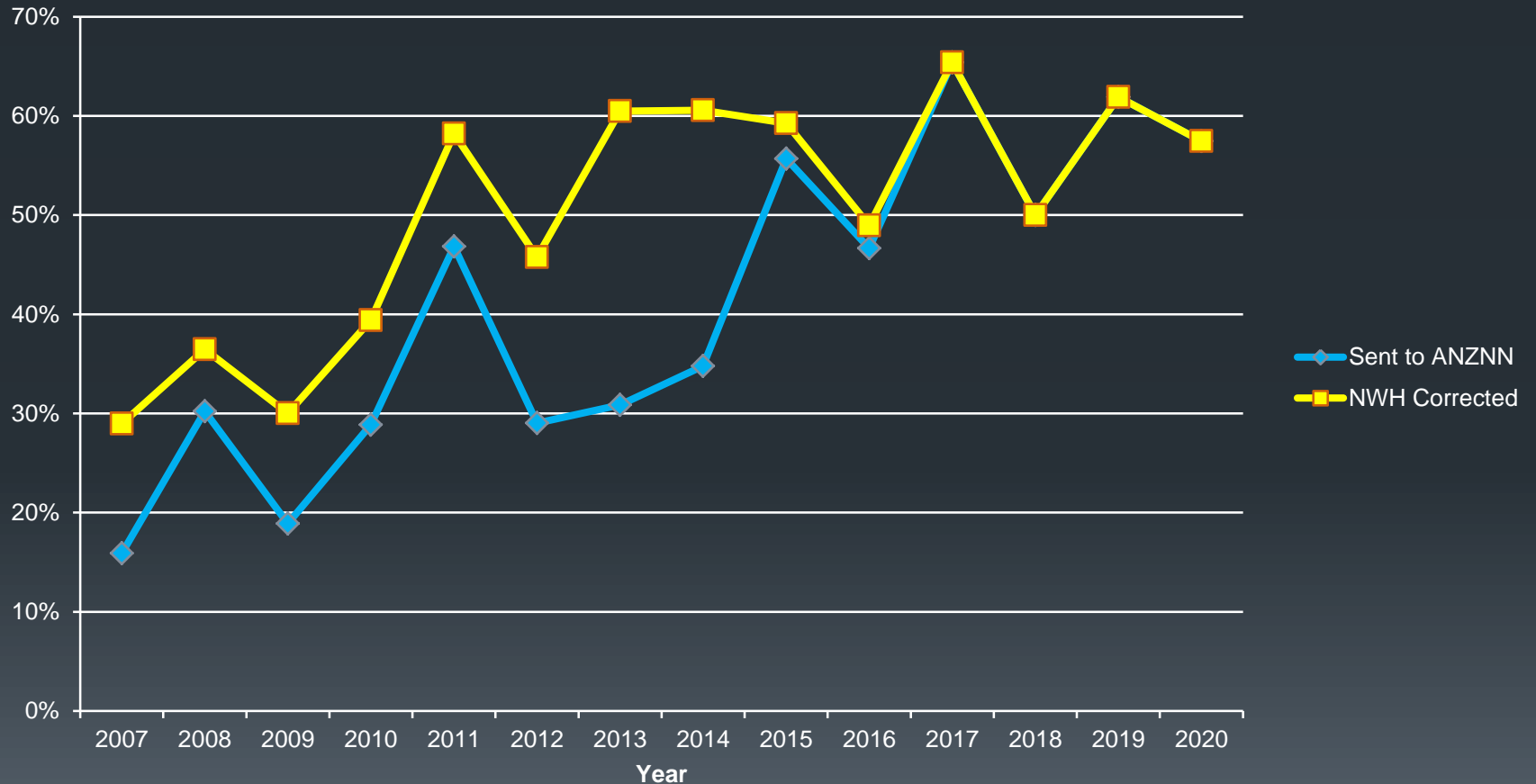
## CLD: NWH 2007-2020 vs ANZNN 2015-2019





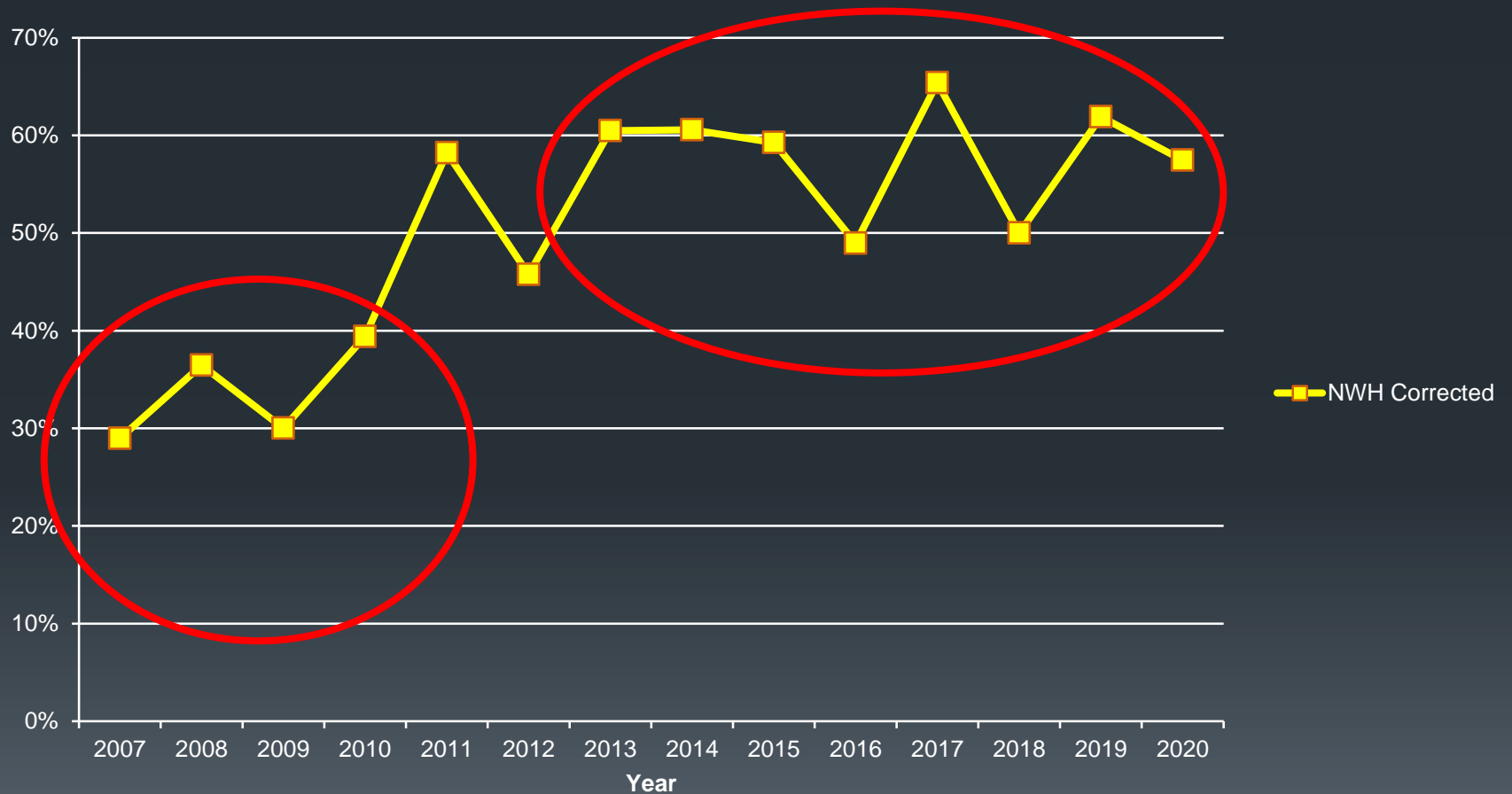
# NWH CLD 2007-2020

Babies <30 weeks gestation

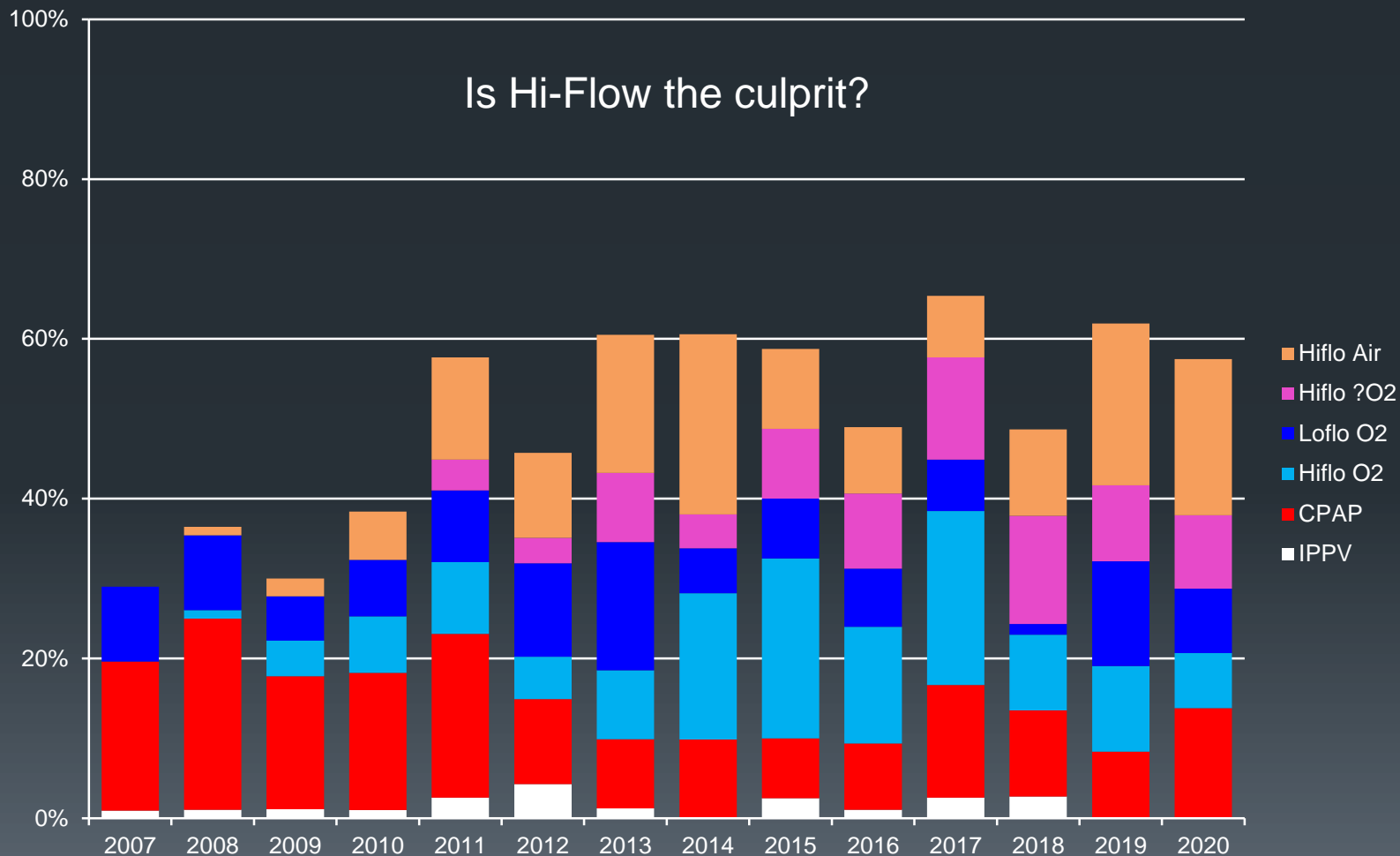


# NWH CLD 2007-2020

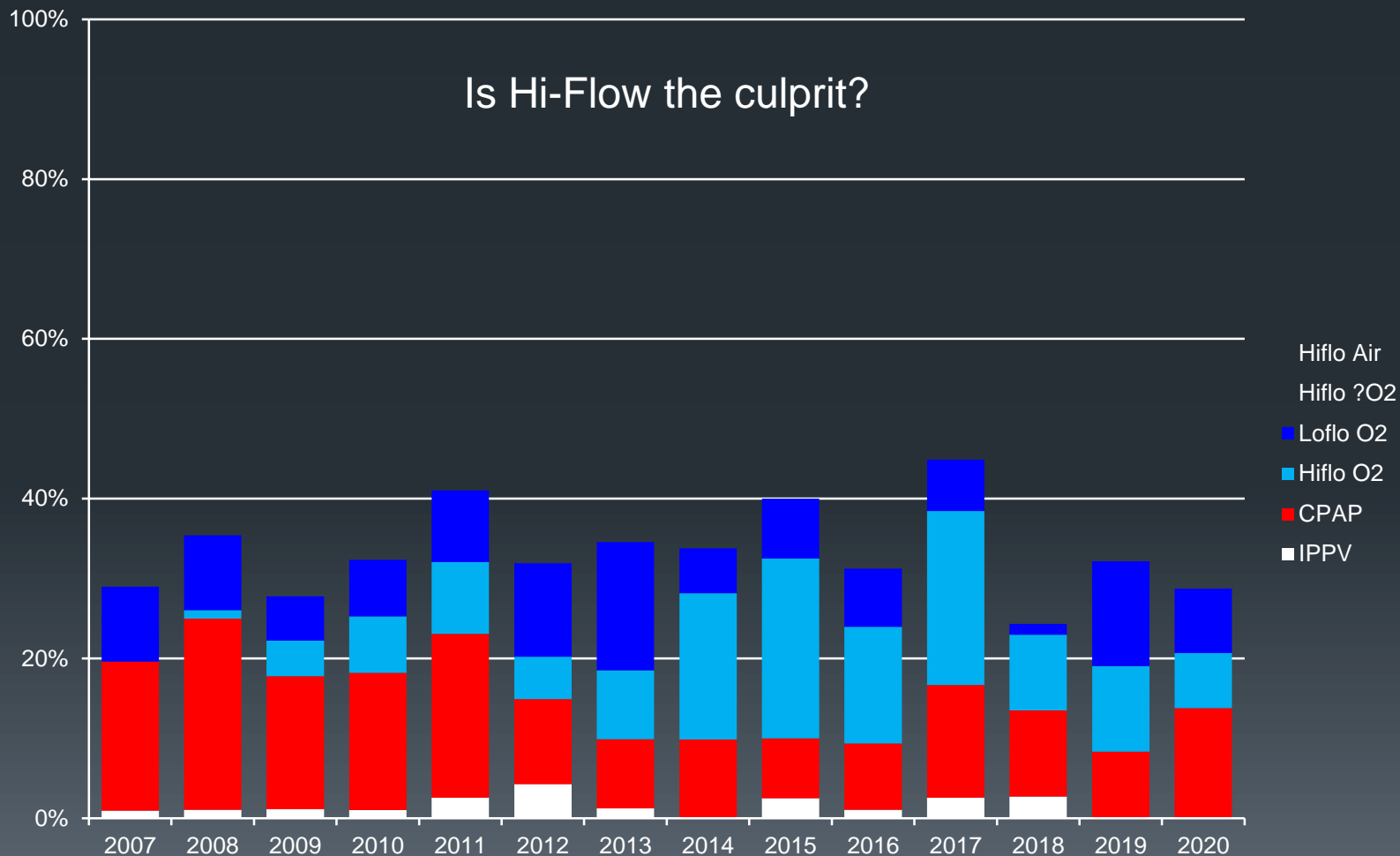
Babies <30 weeks gestation



# Mode of respiratory support at 36 weeks. Babies <30 weeks



# Mode of respiratory support at 36 weeks. Babies <30 weeks



# Outcome in different epochs



|             | 24-25 weeks |         |  | 26-27 weeks |         |     | 28-29 weeks |         |
|-------------|-------------|---------|--|-------------|---------|-----|-------------|---------|
|             | 2007-10     | 2013-20 |  | 2007-10     | 2013-20 |     | 2007-10     | 2013-20 |
| Excluded    |             | 5       |  | 4           |         | 7   |             |         |
| Included    | 93          | 143     |  | 147         | 240     | 185 | 294         |         |
| Survived    | 74%         | 76%     |  | 88%         | 95%     | 97% | 97%         |         |
| CLD         | 60%         | 92%     |  | 40%         | 63%     | 17% | 37%         |         |
| Home Oxygen | 38%         | 64%     |  | 29%         | 35%     | 10% | 17%         |         |
| LOS         | 114         | 121     |  | 87          | 93      | 65  | 71          |         |

# Antecedents in different epochs



|                       | 24-25 weeks |         |  | 26-27 weeks |         |  | 28-29 weeks |         |
|-----------------------|-------------|---------|--|-------------|---------|--|-------------|---------|
|                       | 2007-10     | 2013-20 |  | 2007-10     | 2013-20 |  | 2007-10     | 2013-20 |
| Maternal age          | 28          | 30      |  | 29          | 30      |  | 29          | 30      |
| A/N steroids any      | 56%         | 62%     |  | 60%         | 56%     |  | 59%         | 60%     |
| A/N steroids complete | 90%         | 97%     |  | 93%         | 93%     |  | 90%         | 93%     |
| Inborn                | 97%         | 96%     |  | 93%         | 90%     |  | 91%         | 91%     |
| Caesarean             | 25%         | 38%     |  | 57%         | 58%     |  | 63%         | 56%     |
| PPROM                 | 24%         | 16%     |  | 23%         | 22%     |  | 21%         | 17%     |
| Preterm labour        | 70%         | 43%     |  | 48%         | 34%     |  | 42%         | 30%     |
| Polynesian Ethnicity  | 40%         | 31%     |  | 36%         | 35%     |  | 34%         | 32%     |

# Early condition in different epochs

|                      | 24-25 weeks |         |  | 26-27 weeks |         |  | 28-29 weeks |         |
|----------------------|-------------|---------|--|-------------|---------|--|-------------|---------|
|                      | 2007-10     | 2013-20 |  | 2007-10     | 2013-20 |  | 2007-10     | 2013-20 |
| Gestational age      | 25.0        | 24.9    |  | 27.0        | 27.0    |  | 29.1        | 29.0    |
| Birth weight         | 760g        | 756g    |  | 961g        | 950g    |  | 1211g       | 1231g   |
| Multiple             | 25%         | 22%     |  | 25%         | 25%     |  | 32%         | 20%     |
| Apgar 1/5 minutes    | 4/6         | 5/7     |  | 5/7         | 5/7     |  | 6/8         | 6/7     |
| Base excess <=-9     | 19%         | 16%     |  | 5%          | 13%     |  | 5%          | 2%      |
| Ventilated <2hrs old | 91%         | 87%     |  | 64%         | 52%     |  | 22%         | 27%     |
| Surfactant           | 95%         | 94%     |  | 78%         | 74%     |  | 40%         | 51%     |
| Air leak             | 5%          | 4%      |  | 3%          | 2%      |  | 3%          | 1%      |
| Early infection      | 6%          | 2%      |  | 0           | 2%      |  | 1%          | 3%      |

# Other outcomes in different epochs

|                     | 24-25 weeks |         |  | 26-27 weeks |         |  | 28-29 weeks |         |
|---------------------|-------------|---------|--|-------------|---------|--|-------------|---------|
|                     | 2007-10     | 2013-20 |  | 2007-10     | 2013-20 |  | 2007-10     | 2013-20 |
| NEC                 | 9%          | 8%      |  | 6%          | 1%      |  | 2%          | 0       |
| Surgery             | 17%         | 14%     |  | 12%         | 4%      |  | 4%          | 5%      |
| IVH G3 or G4        | 22%         | 15%     |  | 6%          | 3%      |  | 2%          | 2%      |
| ROP S3 or S4        | 14%         | 11%     |  | 2%          | 4%      |  | 1%          | 0       |
| PDA R <sub>x</sub>  | 45%         | 45%     |  | 41%         | 15%     |  | 8%          | 4%      |
| Late infection      | 24%         | 37%     |  | 16%         | 16%     |  | 5%          | 6%      |
| Survived            | 74%         | 76%     |  | 88%         | 95%     |  | 97%         | 97%     |
| Outcome 2yrs: seen* | 93%         | 99%     |  | 78%         | 92%     |  | 70%         | 72%     |
| Normal/mild delay   | 75%         | 86%     |  | 90%         | 87%     |  | 89%         | 90%     |

ANZNN survival (2018)

76%

93%

96%

\* Born up to 2018



# Median days on support in different epochs



|                | 24-25 weeks |         |  | 26-27 weeks |         |  | 28-29 weeks |         |
|----------------|-------------|---------|--|-------------|---------|--|-------------|---------|
|                | 2007-10     | 2013-20 |  | 2007-10     | 2013-20 |  | 2007-10     | 2013-20 |
| IPPV and HFOV  | 17          | 21      |  | 1           | 0       |  | 0           | 0       |
| CPAP           | 53          | 46      |  | 46          | 39      |  | 15          | 17      |
| IPPV+HFOV+CPAP | 71          | 69      |  | 51          | 43      |  | 16          | 17      |
| Hi-Flow        | 0           | 22      |  | 0           | 21      |  | 0           | 19      |
| CPAP + Hi-flow | 53          | 69      |  | 47          | 61      |  | 15          | 41      |
| Total          | 76          | 91      |  | 51          | 64      |  | 16          | 42      |

# Oxygen administration at 36 weeks in different epochs

Babies discharged home from NWH as data complete in these

|                    | 24-25 weeks |         |  | 26-27 weeks |         |  | 28-29 weeks |         |
|--------------------|-------------|---------|--|-------------|---------|--|-------------|---------|
|                    | 2007-10     | 2013-20 |  | 2007-10     | 2013-20 |  | 2007-10     | 2013-20 |
| Any oxygen         | 41%         | 63%     |  | 29%         | 30%     |  | 8%          | 12%     |
| Air                | 59%         | 37%     |  | 71%         | 70%     |  | 93%         | 88%     |
| Low-flow or 22-29% | 21%         | 54%     |  | 14%         | 22%     |  | 5%          | 12%     |
| 30-39%             | 14%         | 3%      |  | 10%         | 5%      |  | 1%          | 0%      |
| >=40%              | 7%          | 6%      |  | 4%          | 3%      |  | 1%          | 0%      |

# Oxygen administration at 36 weeks in different epochs

Babies discharged home from NWH as data complete in these

|                    | 24-25 weeks |         |  | 26-27 weeks |         |  | 28-29 weeks |         |
|--------------------|-------------|---------|--|-------------|---------|--|-------------|---------|
|                    | 2007-10     | 2013-20 |  | 2007-10     | 2013-20 |  | 2007-10     | 2013-20 |
| Any oxygen         | 41%         | 63%     |  | 29%         | 30%     |  | 8%          | 12%     |
| Air                | 59%         | 37%     |  | 71%         | 70%     |  | 93%         | 88%     |
| Low-flow or 22-29% | 21%         | 54%     |  | 14%         | 22%     |  | 5%          | 12%     |
| 30-39%             | 14%         | 3%      |  | 10%         | 5%      |  | 1%          | 0%      |
| >=40%              | 7%          | 6%      |  | 4%          | 3%      |  | 1%          | 0%      |

# Oxygen administration at 36 weeks in different epochs

Babies discharged home from NWH as data complete in these

|                    | 24-25 weeks |         |  | 26-27 weeks |         |  | 28-29 weeks |         |
|--------------------|-------------|---------|--|-------------|---------|--|-------------|---------|
|                    | 2007-10     | 2013-20 |  | 2007-10     | 2013-20 |  | 2007-10     | 2013-20 |
| Any oxygen         | 41%         | 63%     |  | 29%         | 30%     |  | 8%          | 12%     |
| CLD                | 58%         | 92%     |  | 52%         | 62%     |  | 17%         | 25%     |
| Air                | 59%         | 37%     |  | 71%         | 70%     |  | 93%         | 88%     |
| Low-flow or 22-29% | 21%         | 54%     |  | 14%         | 22%     |  | 5%          | 12%     |
| 30-39%             | 14%         | 3%      |  | 10%         | 5%      |  | 1%          | 0%      |
| >=40%              | 7%          | 6%      |  | 4%          | 3%      |  | 1%          | 0%      |

# Conclusions

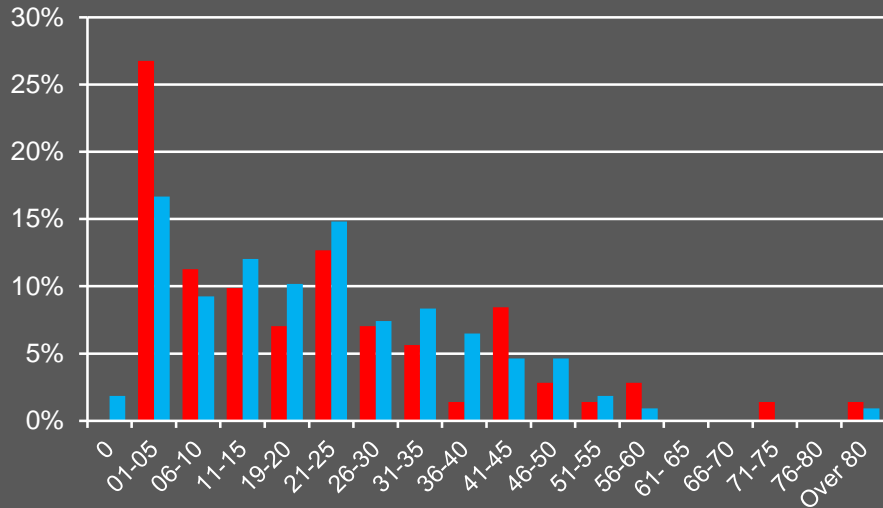
- The definition of CLD is sub-optimal
- It would be better to report  $\text{FiO}_2$  at 36 weeks
- Shift and Walsh tests will be better, but data will be incomplete
- In babies <30 weeks gestation, NWH has had an INCREASE in
  - CLD
  - Length of stay
  - Home Oxygen use
- Most of the increases are from
  - Greater use of Hi-Flow
  - Greater use of low oxygen concentrations during stay
  - Lower threshold to use home oxygen
- Most of these changes are from changing treatment decisions
- Some may be because babies have been sicker (esp 24-25 weeks group)



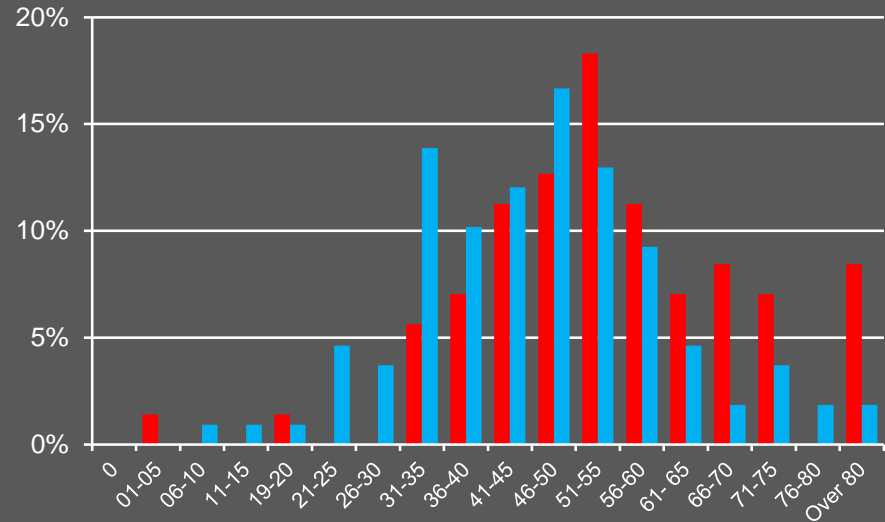
# Days on respiratory support 24-25 week babies



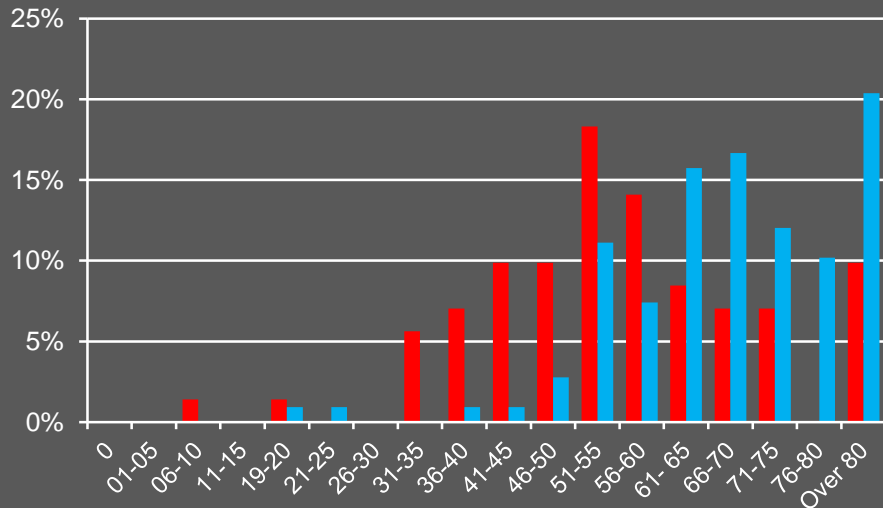
### IPPV + HFOV



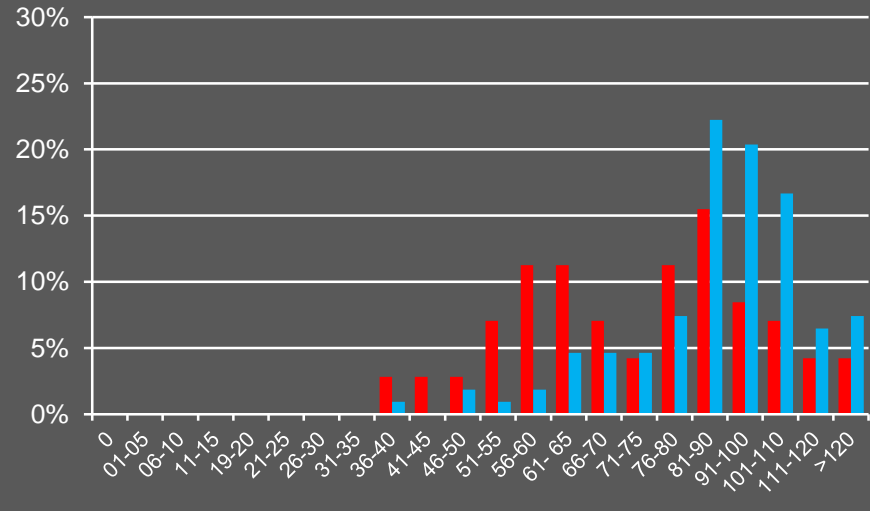
### CPAP



### CPAP + HiFlo



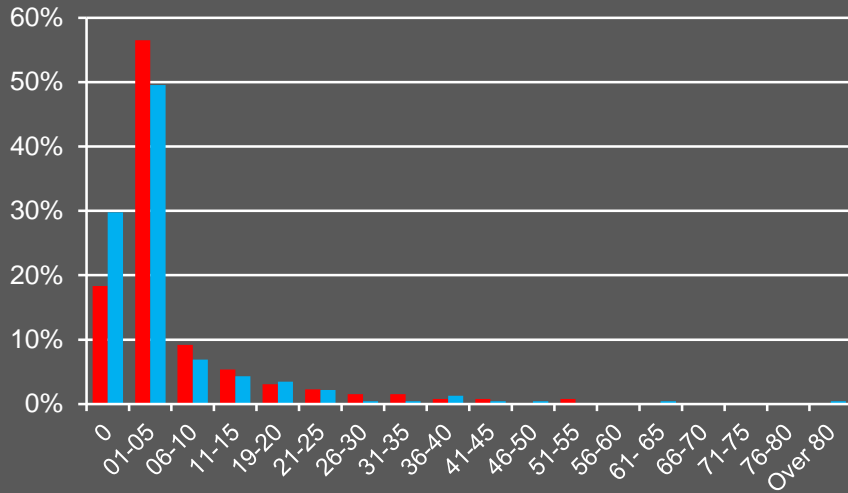
### Total respiratory support



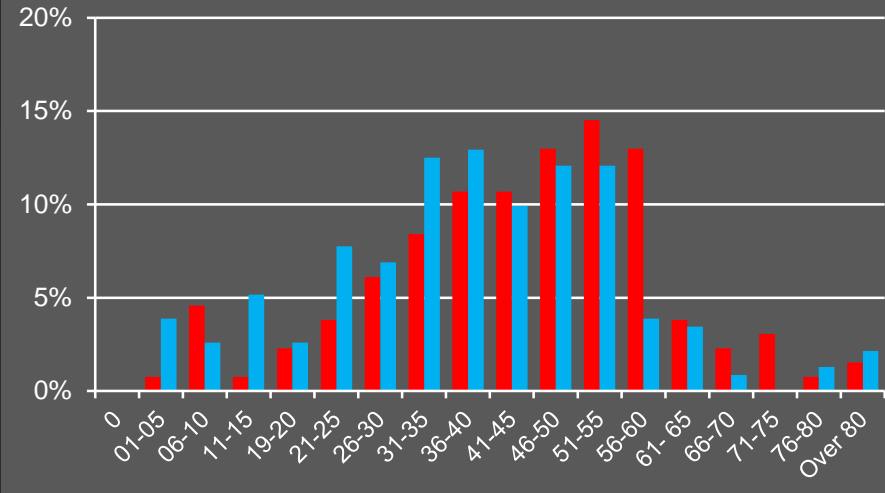
# Days on respiratory support 26-27 week babies



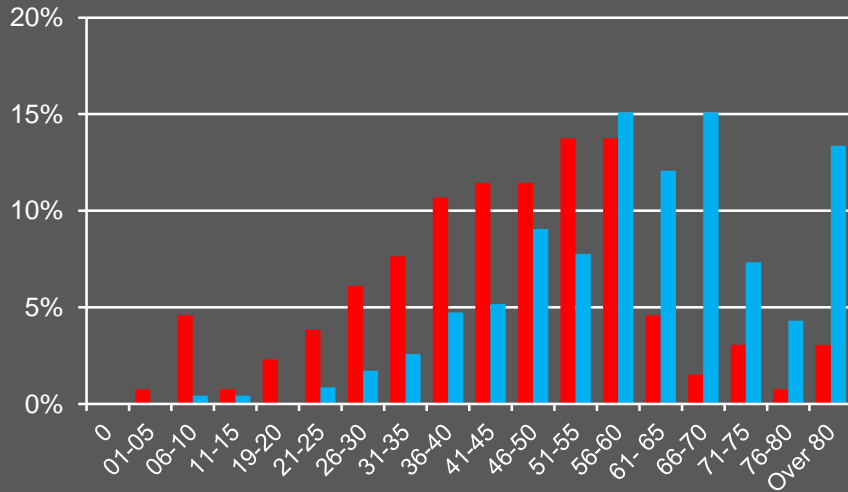
**IPPV + HFOV**



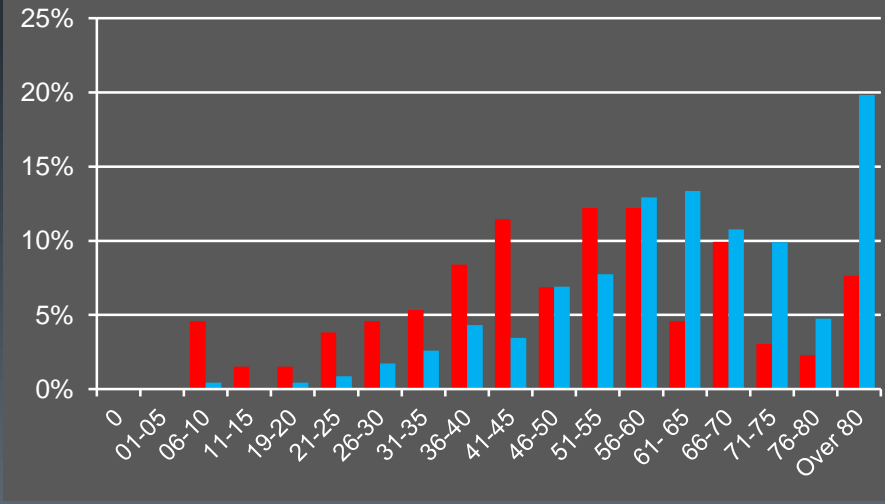
**CPAP**



**CPAP + HiFlo**



**Total respiratory support**

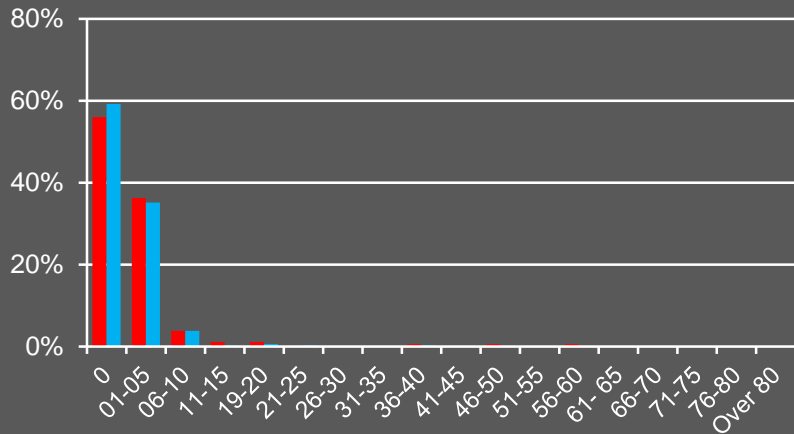




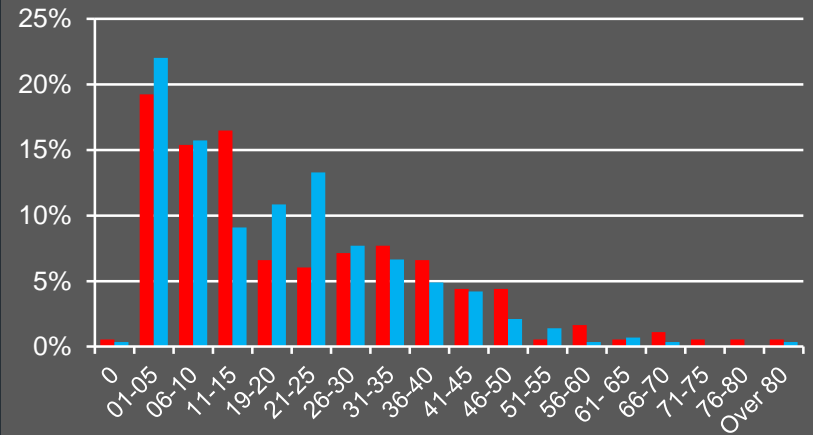
# Days on respiratory support 28-29 week babies



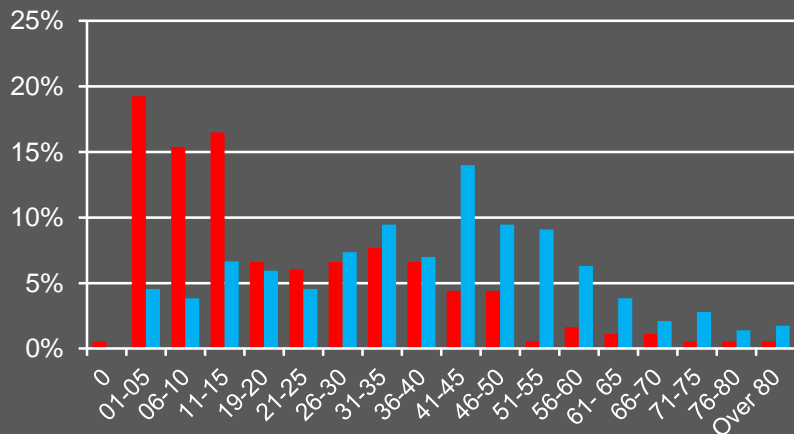
**IPPV + HFOV**



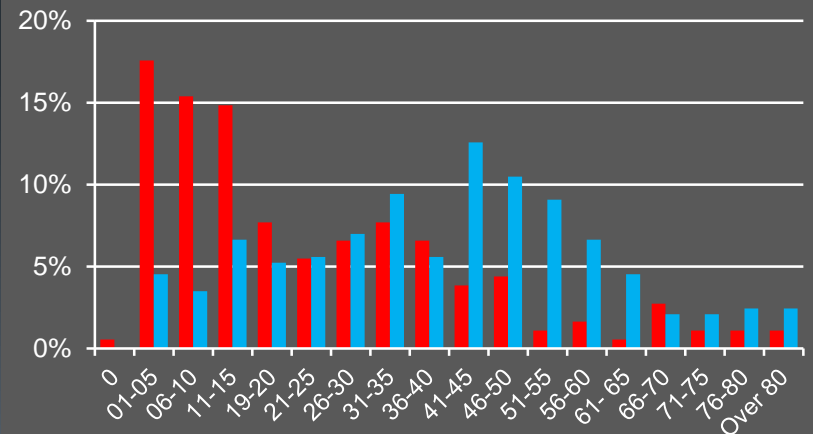
**CPAP**



**CPAP + HiFlo**



**Total respiratory support**



# CLD and Home oxygen by unit of discharge

|        | 2007-10             |         |
|--------|---------------------|---------|
|        | NWH                 | Level 2 |
|        | CLD                 |         |
| 24-25w | 59%                 | 60%     |
| 26-27w | 52%                 | 36%     |
| 27-29w | 17%                 | 14%     |
|        | Home O <sub>2</sub> |         |
| 24-25w | 48%                 | 26%     |
| 26-27w | 43%                 | 25%     |
| 28-29w | 9%                  | 8%      |

|  | 2013-20             |         |
|--|---------------------|---------|
|  | NWH                 | Level 2 |
|  | CLD                 |         |
|  | 92%                 | 94%     |
|  | 62%                 | 62%     |
|  | 25%                 | 43%     |
|  | Home O <sub>2</sub> |         |
|  | 74%                 | 65%     |
|  | 31%                 | 41%     |
|  | 12%                 | 22%     |