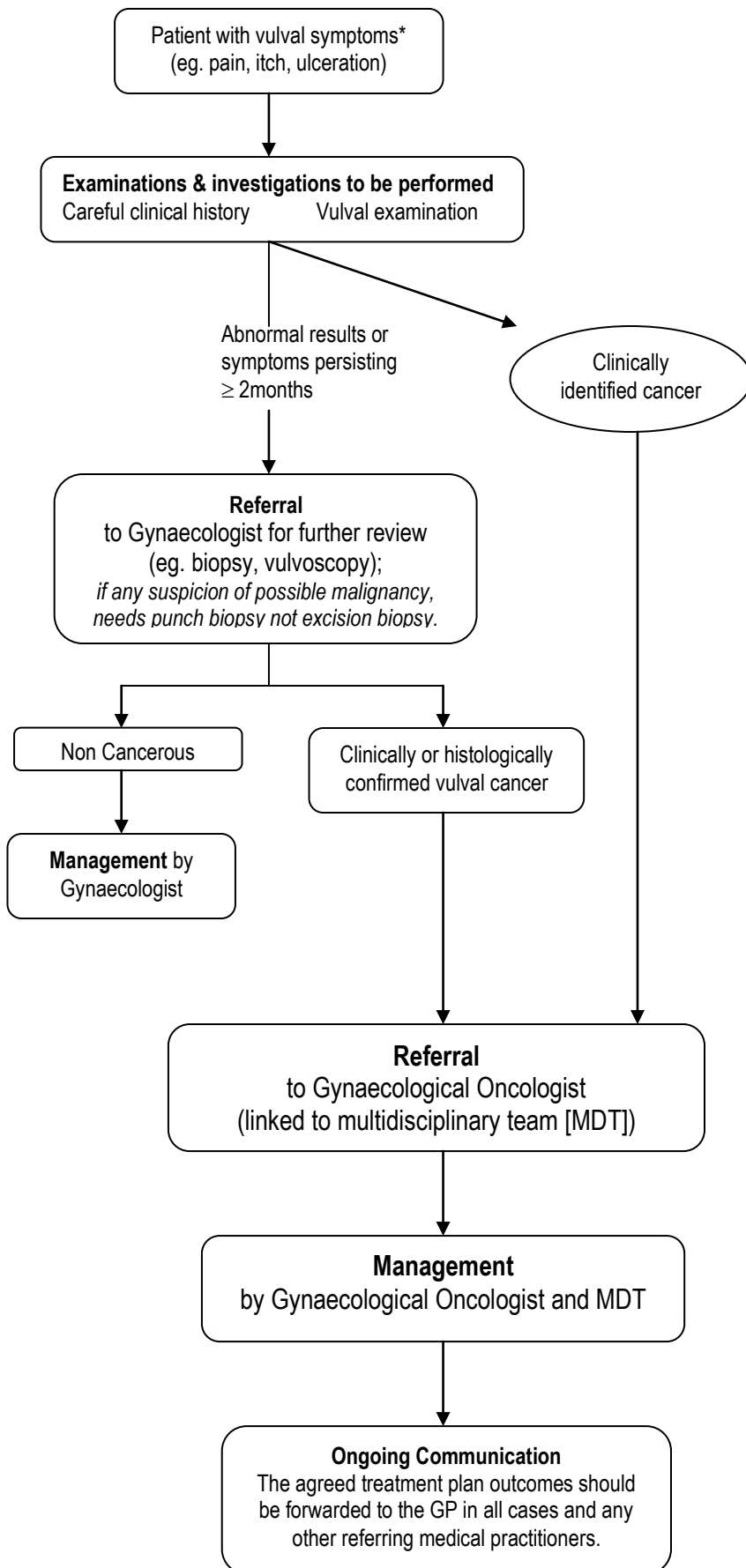


# Vulval Cancer Referral Pathway: for Medical Practitioners

The information contained in this guide is intended to assist GPs and other practitioners assess the symptoms which may indicate vulval cancer, and indicate the preferred referral pathway.



## Checklist for assessing symptoms

### Patient History

- previous vulval dermatosis/VIN
- prolonged skin conditions
- past Gynae history
- past smear history

### Types of symptoms/signs

- itching, burning and soreness of the vulva
- a lump, swelling or wart-like growth
- thickened, raised, red, white or dark patches on the skin of the vulva
- vulval pain
- vulval sore/ulcer
- a mole on the vulva that changes shape or colour